

ArcGIS 10 and REST Services Technology

Presented by:

Becky Meyer

reameyer@indiana.edu

Indiana Geological Survey

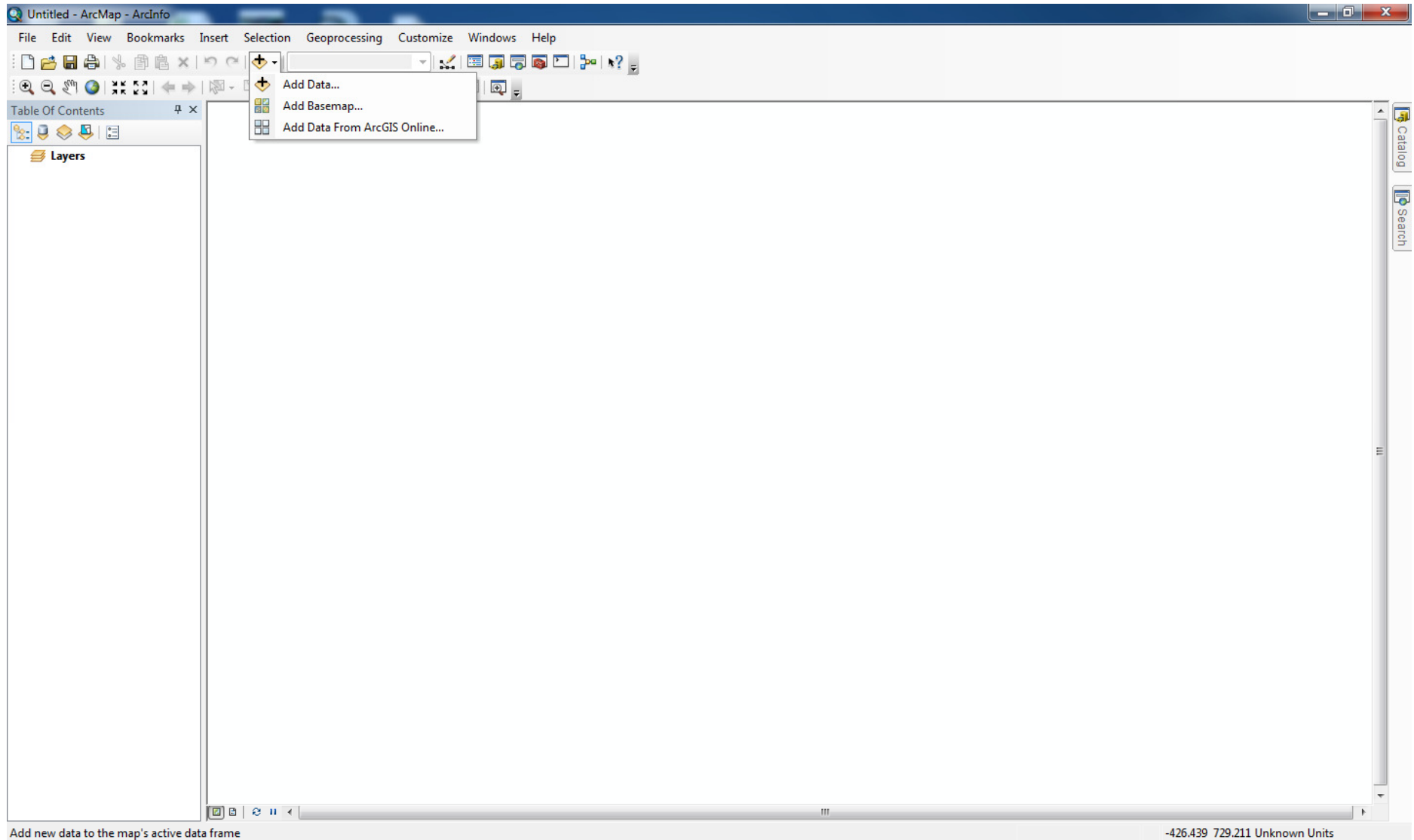
IMCC Benchmarking Workshop on Mine Mapping

February 15 - 16, 2012

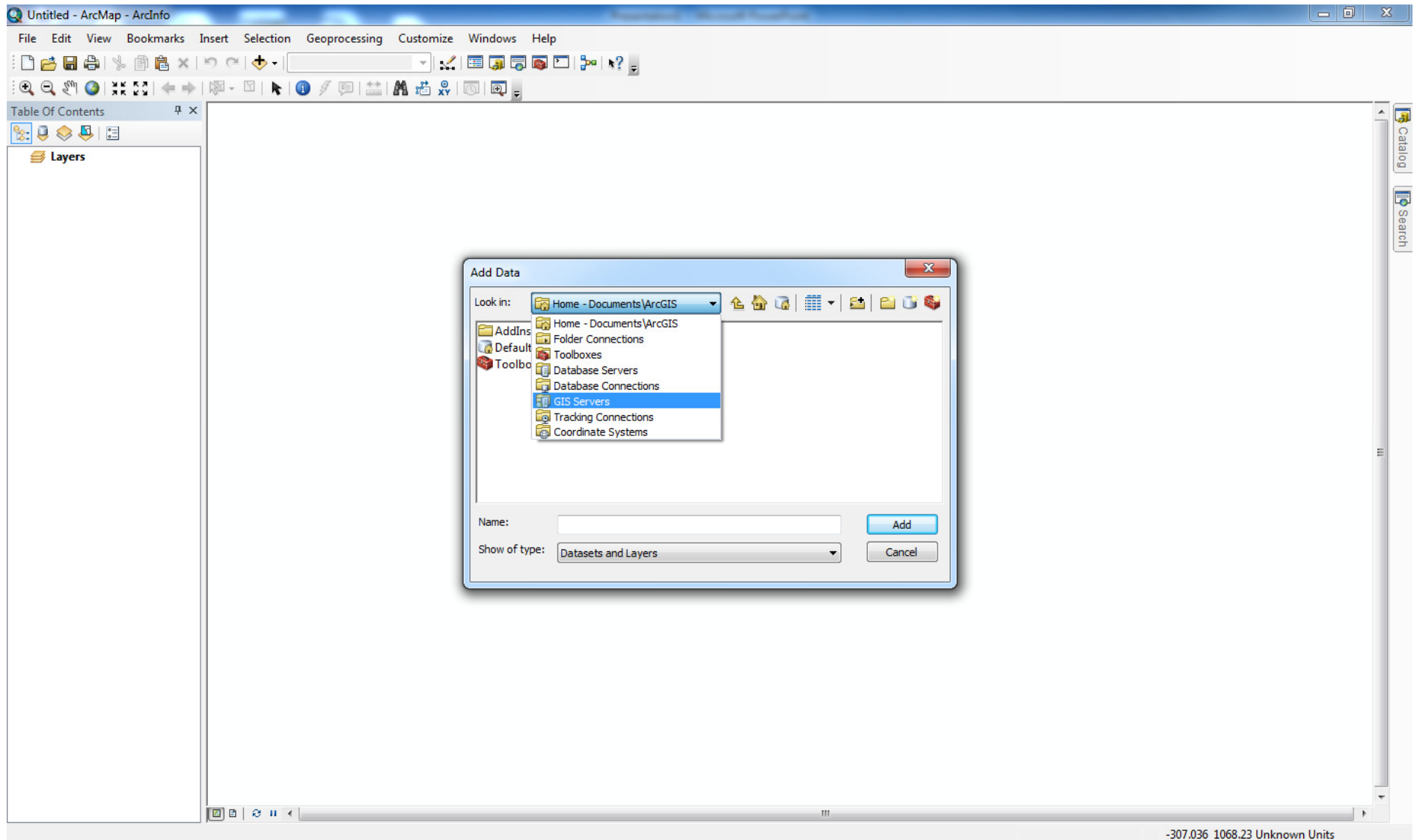


**Connecting to ArcGIS
Services in ArcMap
Demo**

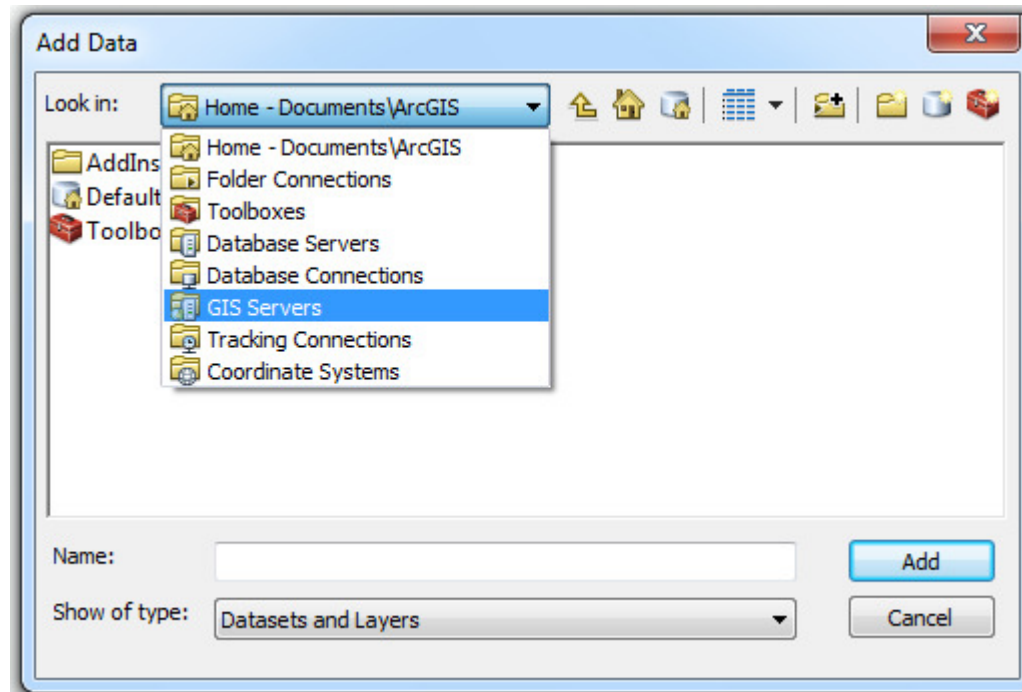
Connecting to an ArcGIS Server in ArcMap



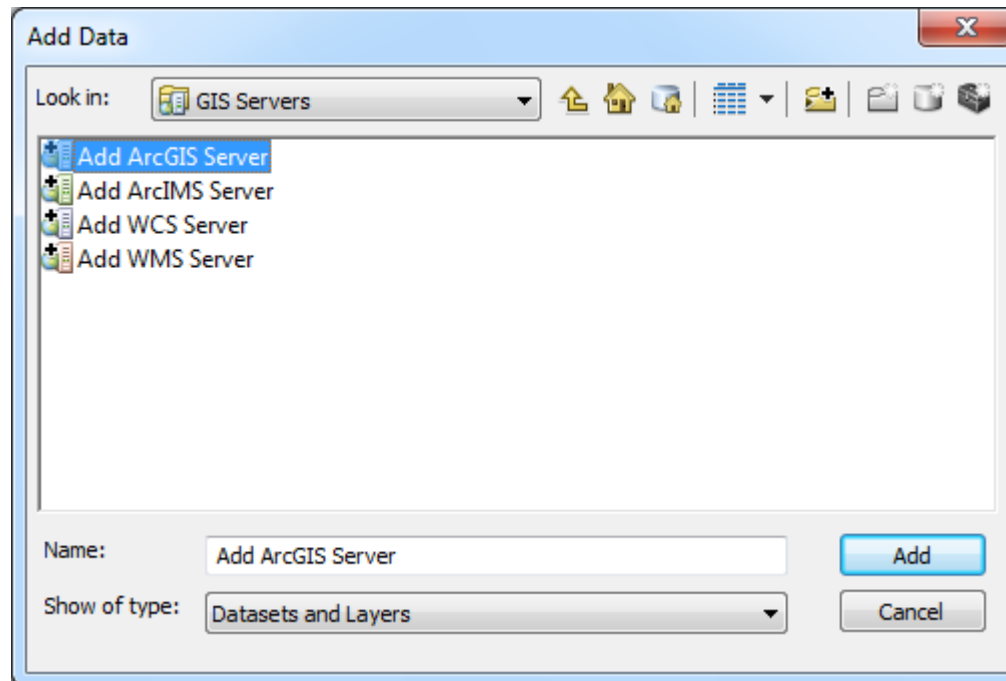
Connecting to an ArcGIS Server in ArcMap



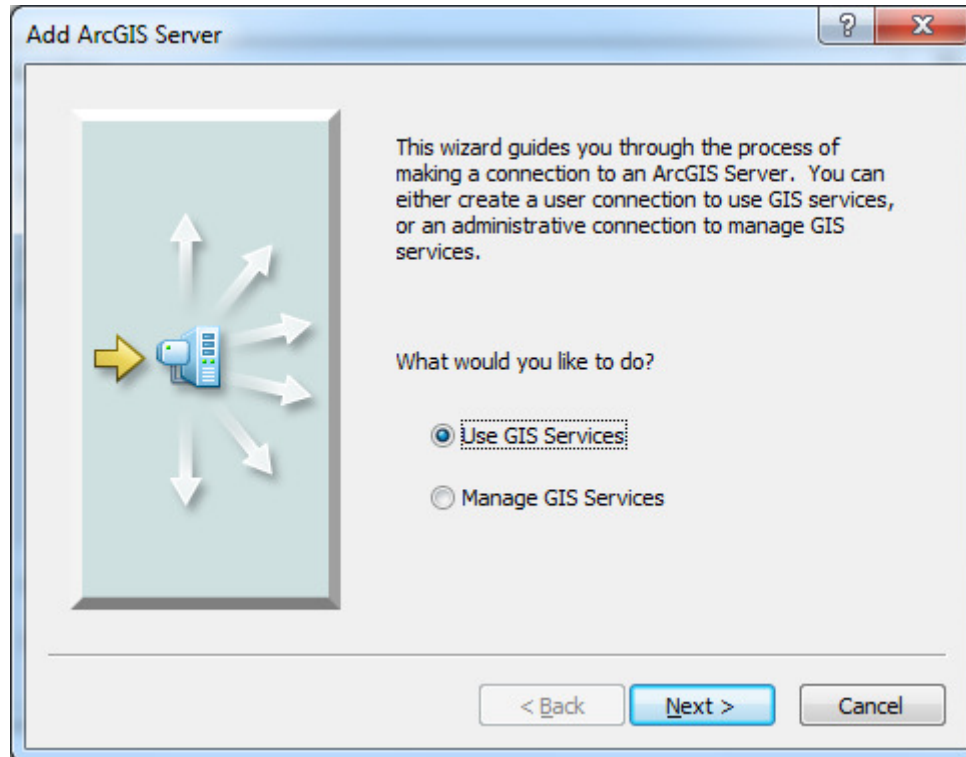
Connecting to an ArcGIS Server in ArcMap



Connecting to an ArcGIS Server in ArcMap



Connecting to an ArcGIS Server in ArcMap



Connecting to an ArcGIS Server in ArcMap

The image shows a 'General' dialog box in ArcMap. The title bar includes a question mark icon and a close button. The main content area is titled 'Choose the type of ArcGIS Server connection'. There are two radio buttons: 'Internet' (selected) and 'Local'. Under 'Internet', there is a 'Server URL:' label and a text box containing 'http://maps.indiana.edu/arcgis/services'. Below this, a smaller text box contains 'http://www.myserver.com/arcgis/services'. Under 'Local', there is a 'Host Name:' label and an empty text box. Below these options is a section titled 'Authentication (Optional)' which contains a 'User Name:' label and an empty text box, a 'Password:' label and an empty text box, and a checked checkbox labeled 'Save Username/Password'. At the bottom of the dialog are three buttons: '< Back', 'Finish', and 'Cancel'.

General

Choose the type of ArcGIS Server connection

Internet

Server URL:

Local

Host Name:

Authentication (Optional)

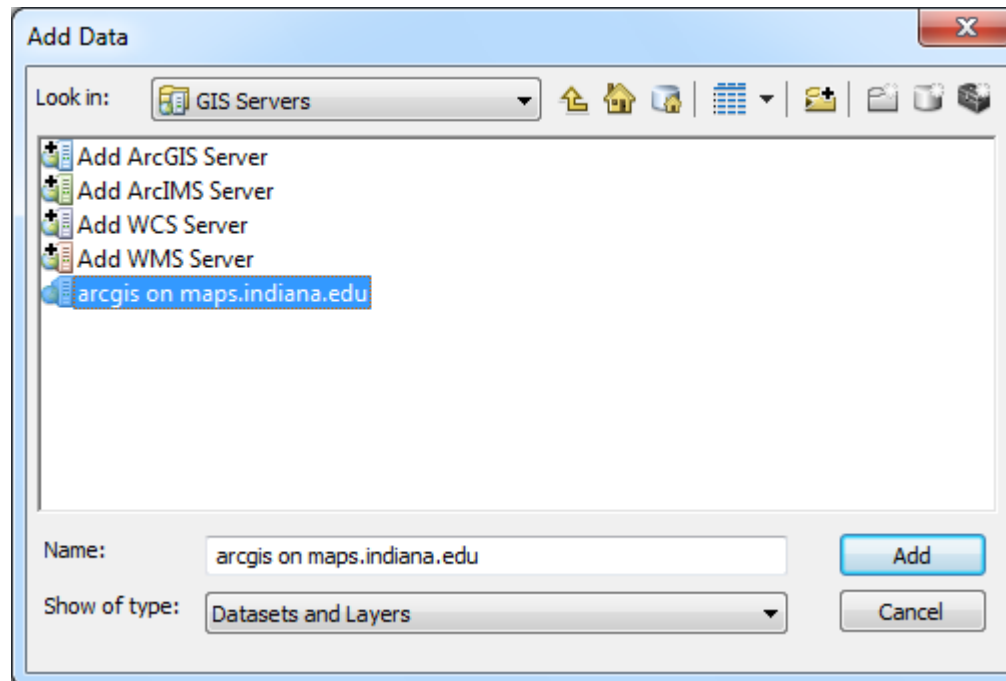
User Name:

Password:

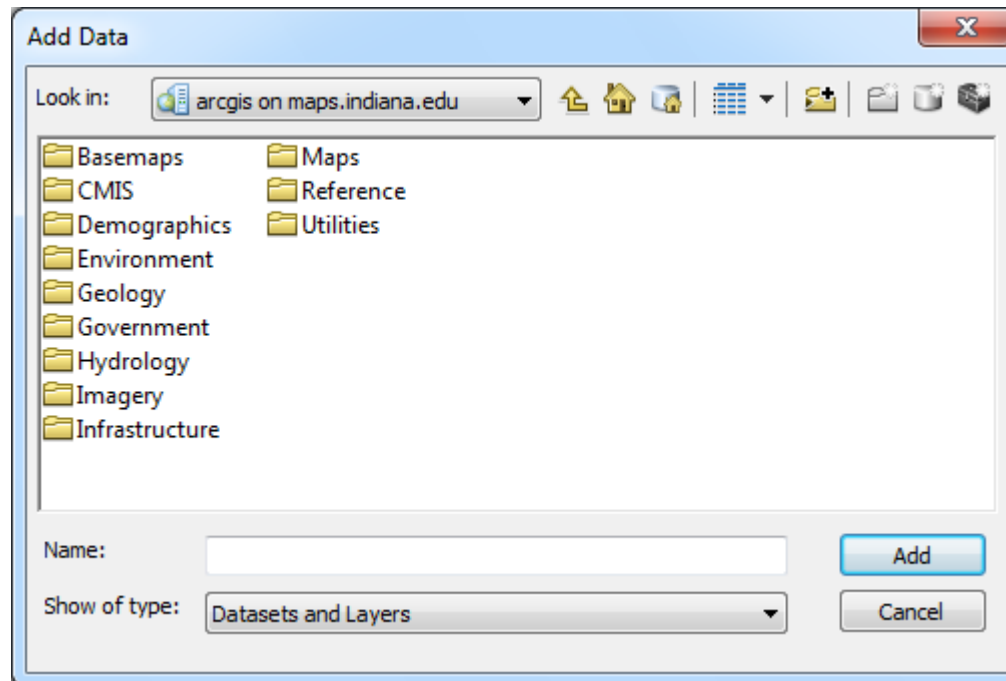
Save Username/Password

< Back Finish Cancel

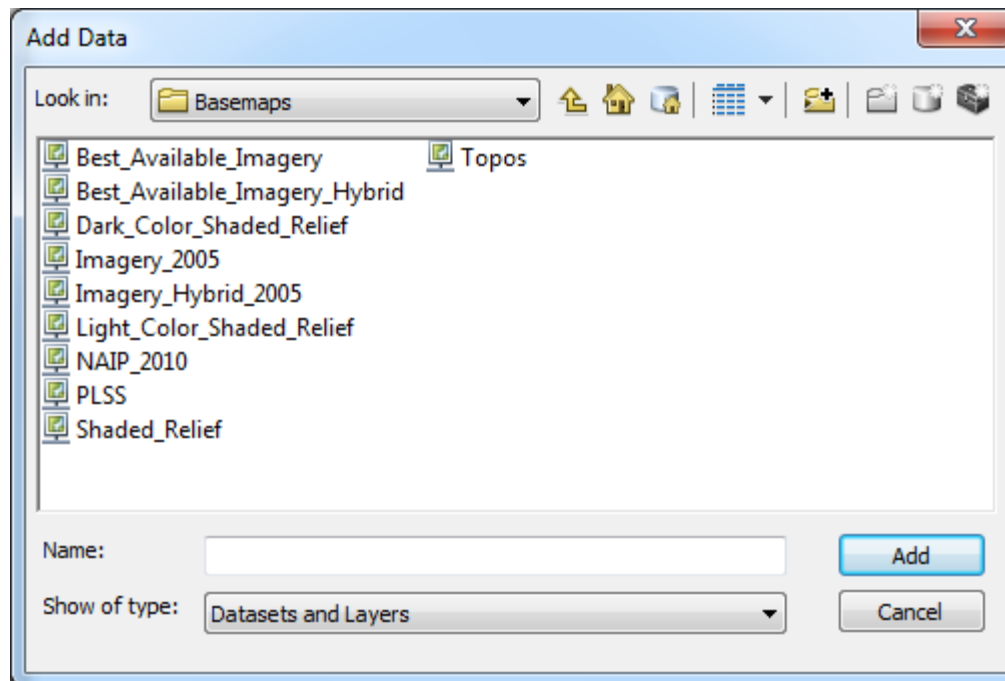
Connecting to an ArcGIS Server in ArcMap



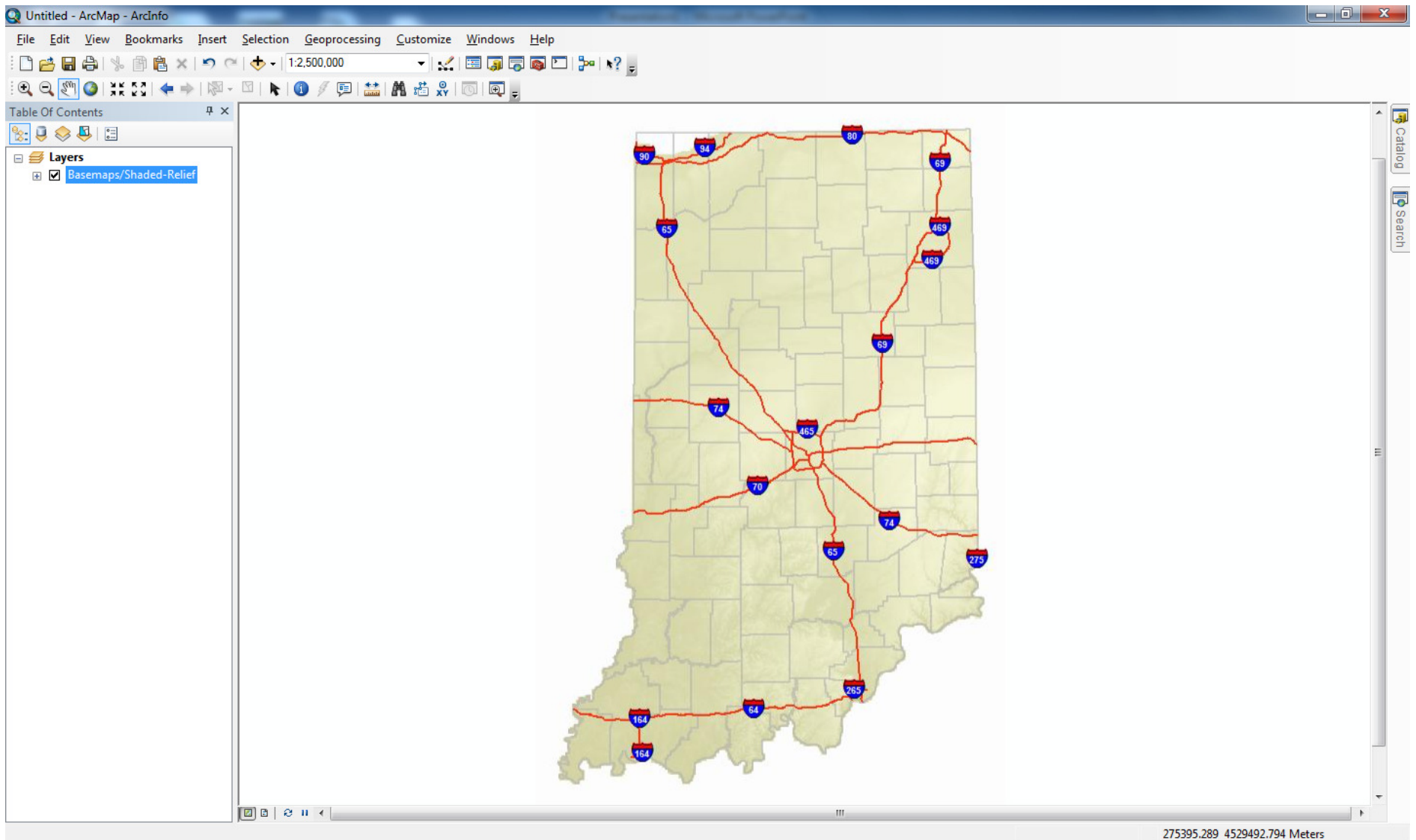
Connecting to an ArcGIS Server in ArcMap



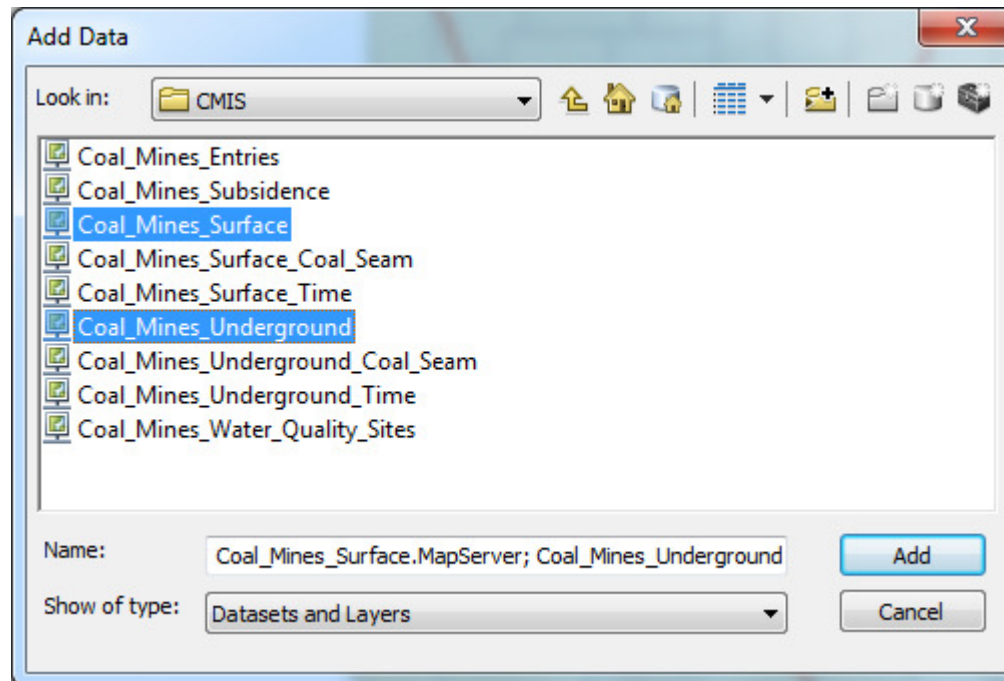
Connecting to an ArcGIS Server in ArcMap



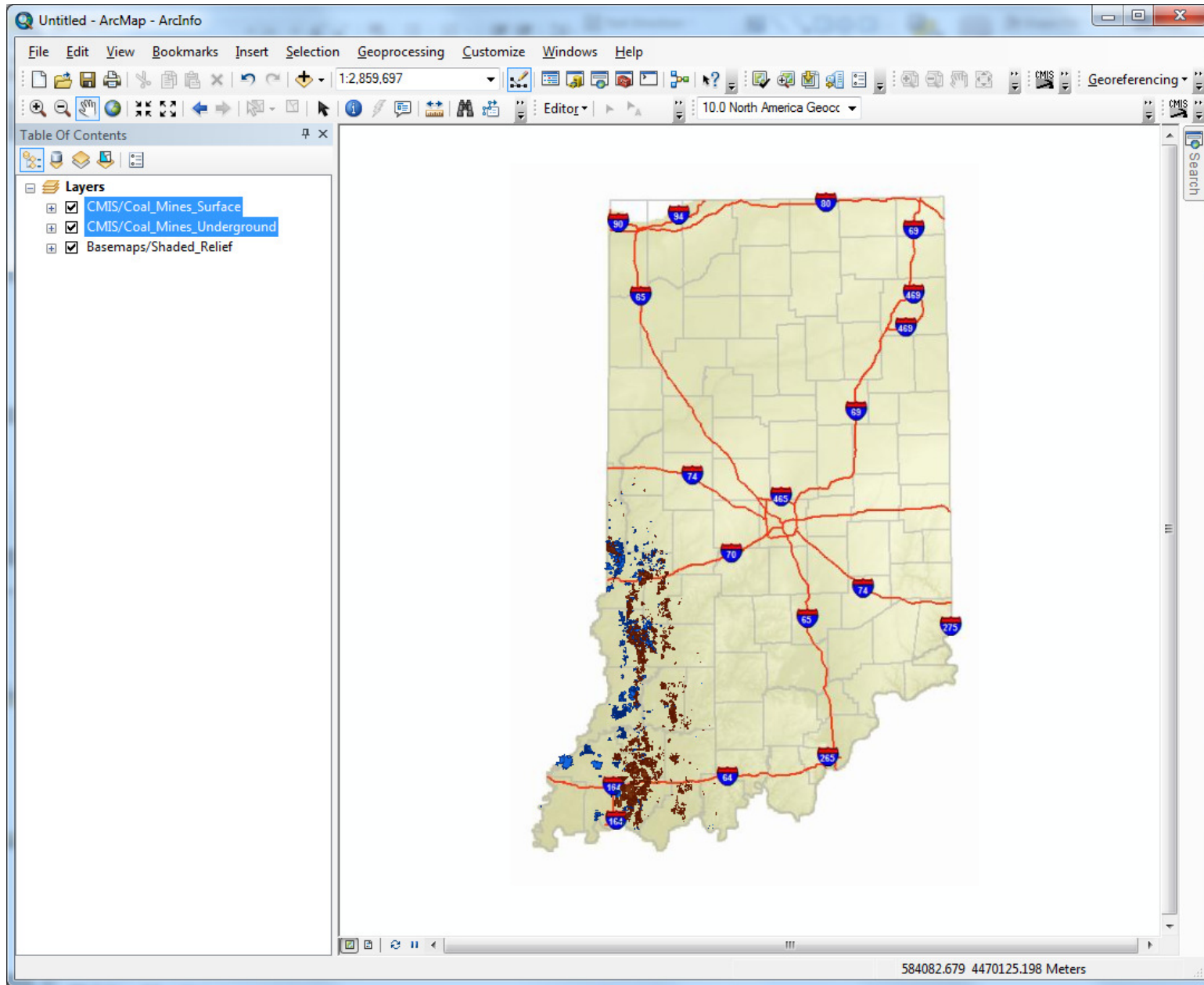
Connecting to an ArcGIS Server in ArcMap



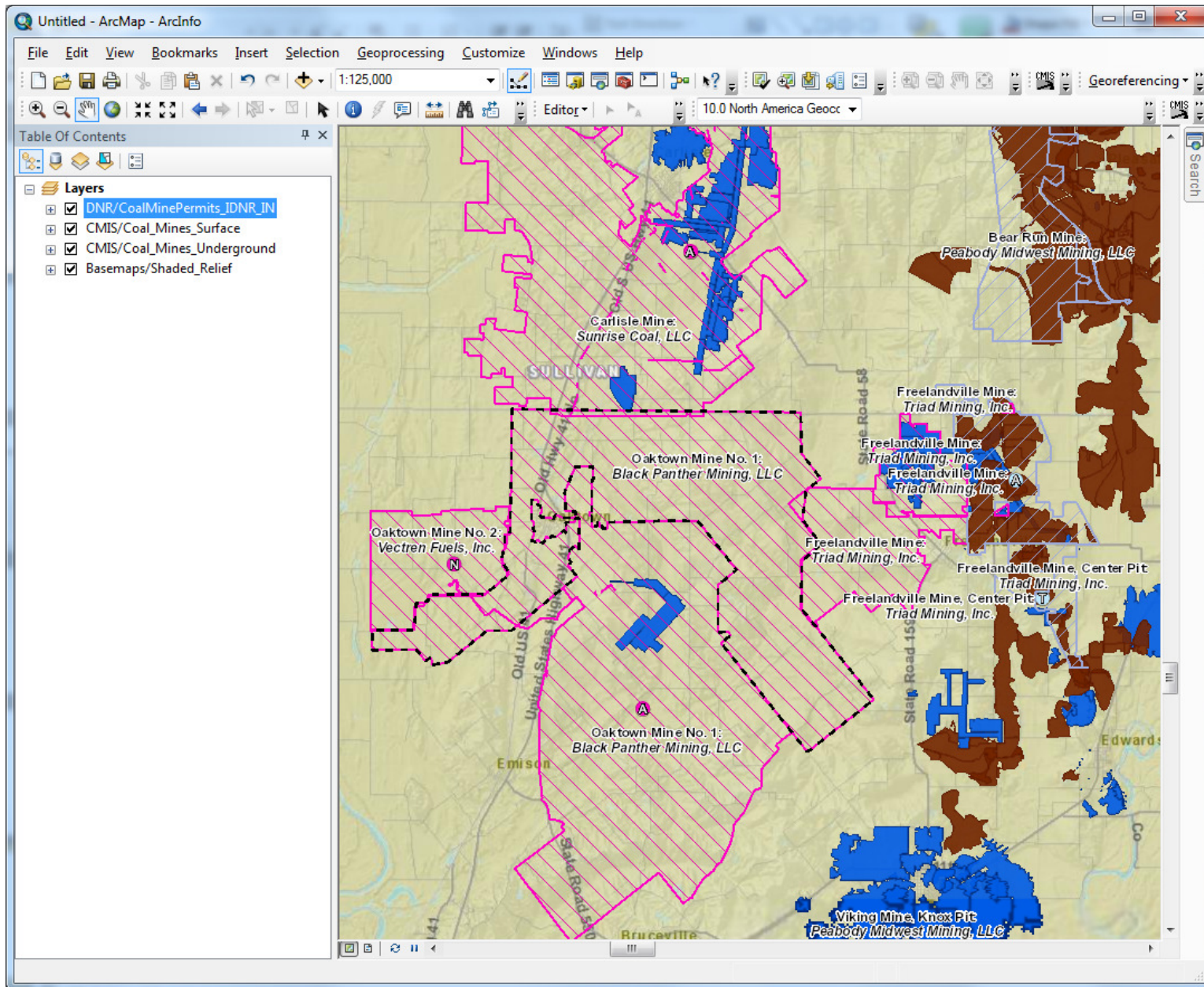
Connecting to an ArcGIS Server in ArcMap



Connecting to an ArcGIS Server in ArcMap



Connecting to an ArcGIS Server in ArcMap



ArcGIS Rest Services in ArcMap

End Demo