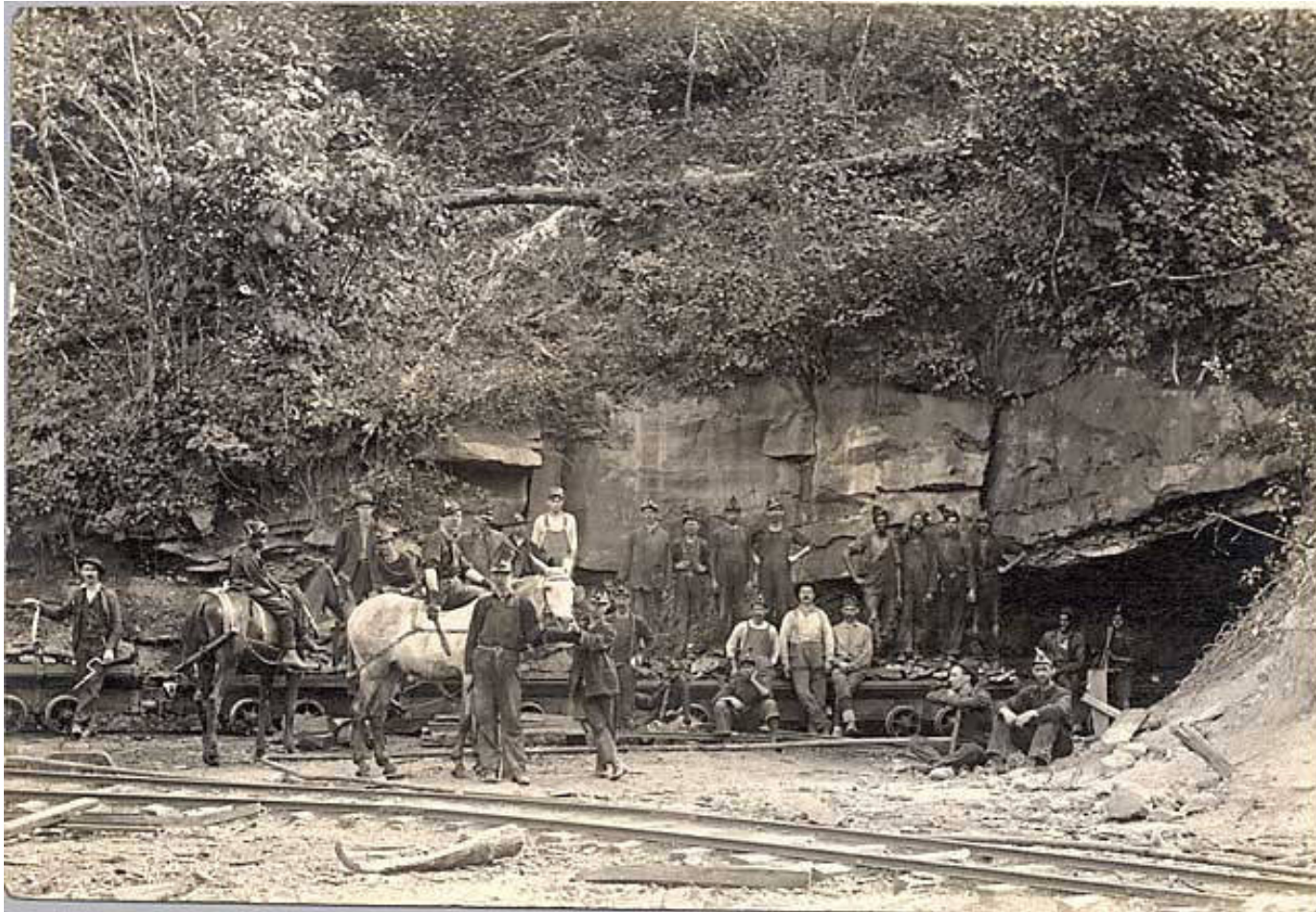


Wide Format Scanners for mine maps 2012

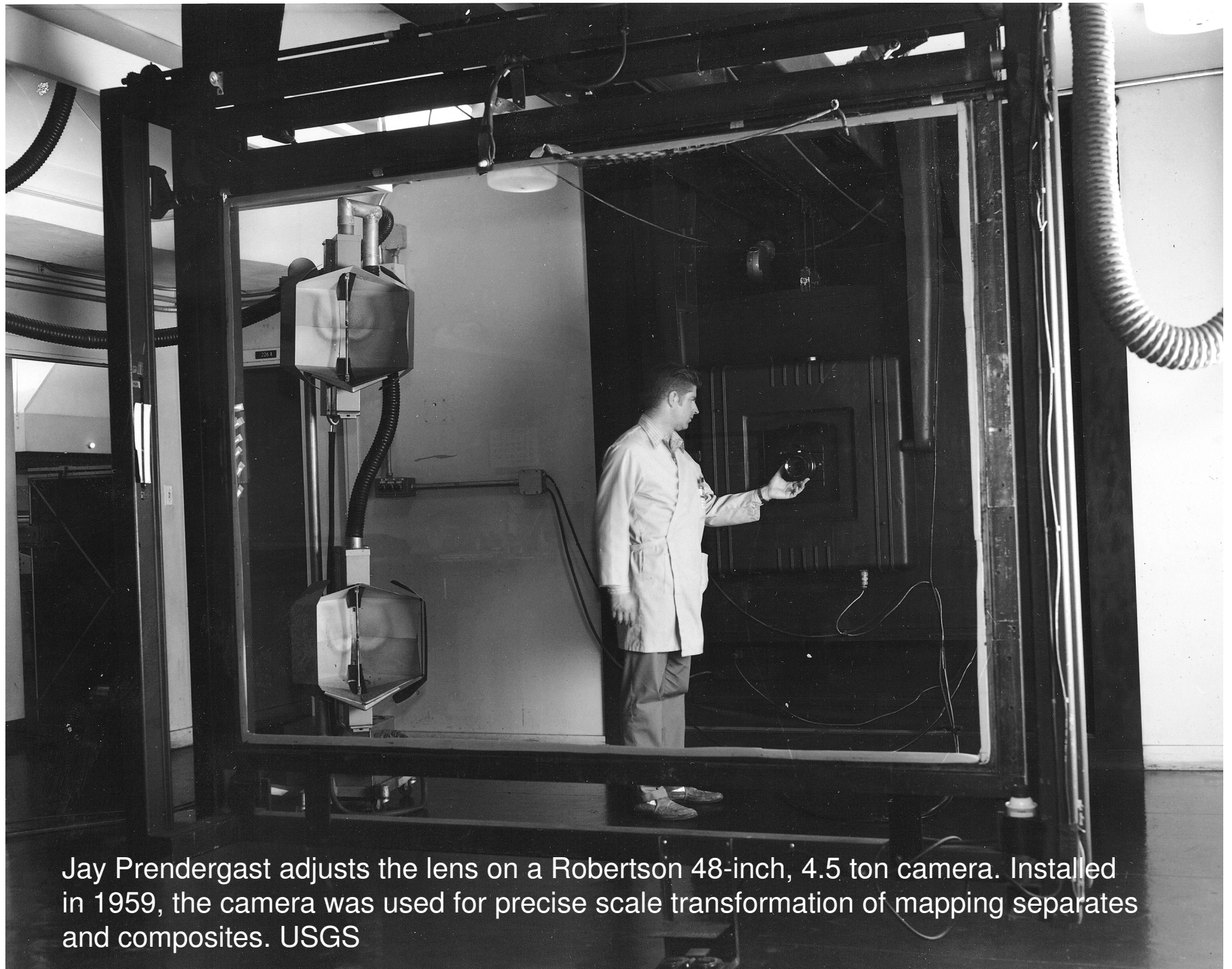


Kentucky Historical Society

USGS copy camera for maps

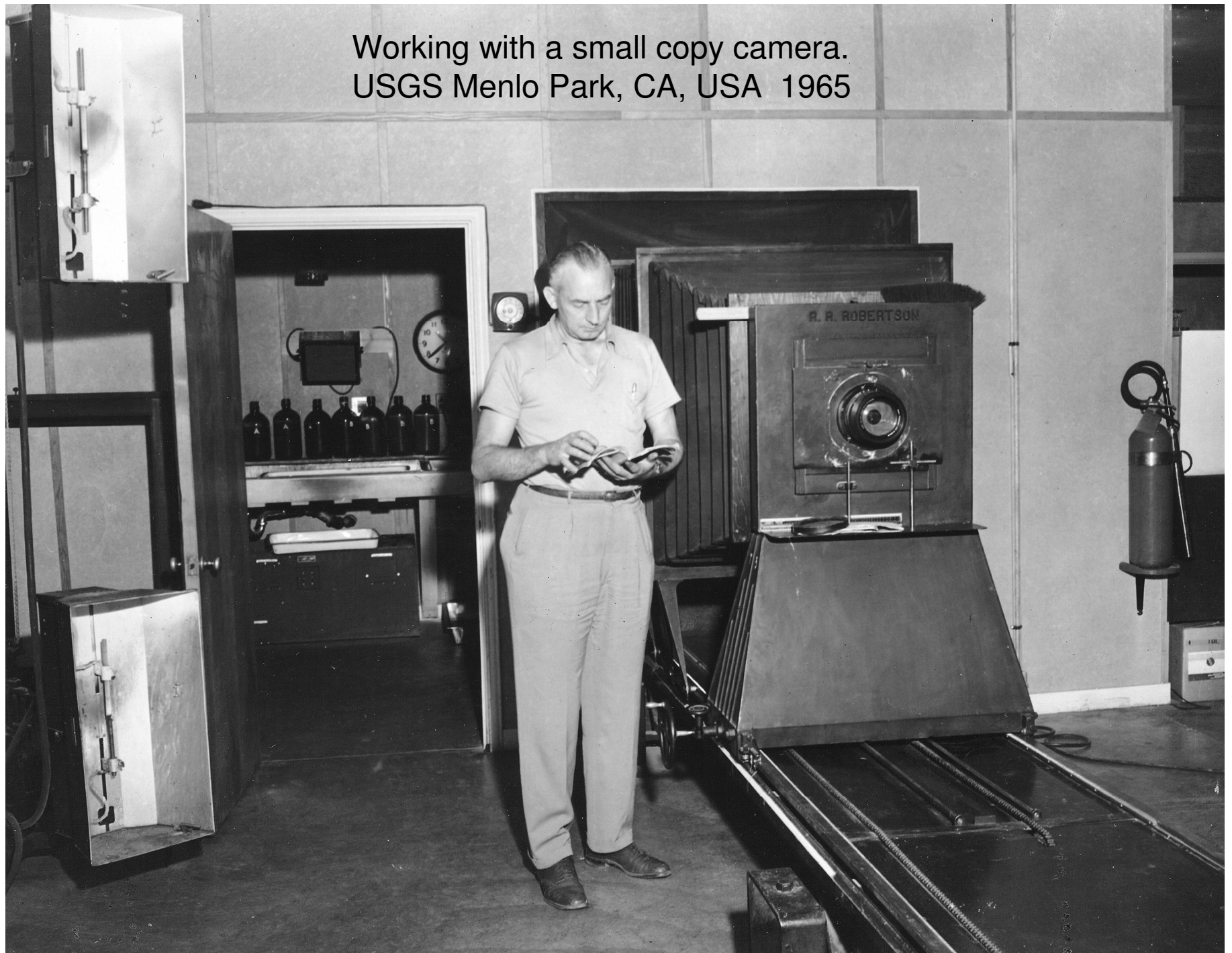
Calvin Hazlewood works with a 48-inch Robertson copy camera. Menlo Park, CA, 1965





Jay Prendergast adjusts the lens on a Robertson 48-inch, 4.5 ton camera. Installed in 1959, the camera was used for precise scale transformation of mapping separates and composites. USGS

Working with a small copy camera.
USGS Menlo Park, CA, USA 1965



Planetary Microfilm camera



DeVere 480 copy camera



Digital vertical process camera



- David Rumsey from the article Historical Maps Online
- <http://www.stonybrook.edu/libmap/coordinates/seriesb/no3/b3.htm>



David Rumsey Map Collection

150,000 maps online <http://www.davidrumsey.com/>

David Rumsey Map Collection

CARTOGRAPHY ASSOCIATES

THE COLLECTION

✦ Share this Page

Welcome to the David Rumsey Map Collection Database and Blog. The Map Database has many viewers and the Blog has numerous categories.

The historical map collection has over 30,000 maps and images online. The collection focuses on rare 18th and 19th century [North American](#) and [South American](#) maps and other cartographic materials. Historic maps of the [World](#), [Europe](#), [Asia](#), and [Africa](#) are also represented.

Popular collection categories include [antique atlas](#), [globe](#), [school geography](#), [maritime chart](#), [state](#), [county](#), [city](#), [pocket](#), [wall & case](#), [children's](#), and [manuscript maps](#). Search examples are [United States map](#), [Geology maps](#), [California map](#), [Afghanistan map](#), [America map](#), [New York City map](#), [Chicago map](#), and [U.S. Civil War maps](#). Browse map categories: [What](#), [Where](#), [Who](#), [When](#). The collection can be used to study history,



David Rumsey Map Collection the hardware

- PhaseOne Powerphase 4x5 digital scanning camera back (150 megabyte capture)
- PhaseOne PowerphaseFX 4x5 digital scanning camera back (380 megabyte capture)
- PhaseOne image-capture software
- Sinar X 4x5 view camera
- Rodenstock lenses
- Kaiser RePro copy stand with Videssence Icelites
- <http://www.davidrumsey.com/about/articles/about>

PowerPhase FX - Offering Record Breaking Features

Phase One's new PowerPhase FX for 4x5 view cameras is the most advanced digital imaging system in the world, offering record breaking features unmatched by any other camera back. The PowerPhase FX pushes digital imaging further with the highest files sizes, the fastest scan times, and the largest capture area available.



Advanced features included a 14 bit internal color depth offering high resolution digital images with perfect highlight and shadow details. An up to 200' long IEEE1394 cable allows for incredible scan times of up to 240MB/minute with complete freedom in the studio. Phase One's new patent pending Active Power Stabilizing technology enables on-the-fly intensity compensation. Capturing the finest details on even the largest originals, the PowerPhase FX is perfectly engineered for flat art reproduction. PowerPhase FX is also ideal for photographers who need the highest quality. Product versatility and powerful, easy to use software including complete color management tools make the Powerphase FX the only choice.

Record Breaking Features

- **Highest File Sizes:**
 - 380MB (8 bit RGB)
 - 760MB (48 bit RGB)
 - 1GB (64 bit CMYK)
- **Fastest Scan Times: Up to 240MB/minute**
- **World's Highest Resolution: 10,500 x 12,600 pixels**
- **Largest Capture Area: 8.4 cm x 10 cm (3.3" x 4")**
- **Most Sensitive ISO: 1600 ISO**
- **Fastest Connection: Up to 200' long IEEE1394 Cable Connection (considered the most powerful communication protocol)**
- **Patent pending Active Power Stabilizing technology enabling on-the-fly light intensity compensation**

Icam document camera

PowerPhase FX scanning back

<http://www.icamarchive.co.uk/largeformat.htm>

Icam's large format document handling camera



Icam provide solutions to even the most difficult capture problems . Illustrated is the Icam Atlas camera designed to capture documents such as tithe maps with the minimum of handling. The digital camera used is the ultra high resolution PowerPhase FX scanning back capable of capturing an A0 document at almost 300 dpi. The Atlas utilises cold fluorescent lighting to protect documents. The lower platen is a rail system that allows the document to be moved under the camera head. Documents above A0 size are captured in sections then stitched in software and presented in the Archangel mapping format so that each map is available to the public in the highest resolution on a single self running CD. This was developed for the Kent Tithe map project (see Case histories) and is available for rental for specific projects



- BetterLight scanning back
- http://www.betterlight.com/artRepro_feature.html

For Art Reproduction... There is No Better Choice

More and more of the world's highest quality fine art reproduction and museum archiving is being accomplished with Better Light scanning backs. Large format has always been the preferred camera for art reproduction — the larger the format, the better the reproduction of detail from the original. Better Light scanning backs are made for 4x5 view cameras and copy stands, and provide digital capture quality superior to large format film or any other digital camera system.

Better Light's pure RGB pixel data captures billions of accurate colors with outstanding detail and clarity. Superior resolution, coupled with the lack of film grain and accuracy of focus, exposure, and tone control, make Better Light's first-generation digital files closer to perfection.

Many other features of the scanning back and Better Light's ViewFinder™ software aid in efficient and precise reproduction of all types of flat works of art, as well as three-dimensional pieces from vases to sculptures.

► [LEARN MORE ABOUT THE ADVANTAGES OF ART REPRODUCTION WITH A BETTER LIGHT SCANNING BACK](#)



Master copy of Sir Thomas Lawrence "The Calmady Children"
30"x30" oil painting by Terry Guyer

THE QUALITY YOU EXPECT:

Huge Digital Files for Fine Detail and Life-Size Reproduction — The more detail that is recorded from the original, the better that detail will be maintained in any size reproduction — from a small image on the Internet to a high-quality gicleé reproduction. The scanning back's resolution can be adjusted as needed for the desired output size.



Superior Color and Exposure Accuracy with NO FILM GRAIN — A large preview image is used to make adjustments for precise exposure, color balance, and contrast BEFORE the final image capture. Each customized exposure is based on the subject matter, lighting conditions, and method of reproduction to make the final image as accurate as possible. No guesswork as with film...and no grain, dust, or processing flaws.

Sharp Focus, Corner to Corner — Better Light's ViewFinder™ software includes a digital focus verification function that allows perfect focus on the surface of the art, measured using the actual image sensor. Other camera systems rely only on visual focus with subsequent mechanical tolerance errors that create less than ideal sharpness and some loss of detail.

- Betterlight digital copy camera
- http://www.udevelop.com/pages/Copy_Camera_Scans.htm



- Zeutschel large format imaging

- <http://www.thecrowleycompany.com/scanning-equipment/zeutschel/index.html#productTypes>





Kentucky's in-house collection of coal mine maps.

1 million square feet ,
over 180,000 documents

As of 01/31/2012

73,020 total documents online

31,875 Transmittal Letters

2,239 stitch partials

38,906 maps archived ; jpeg

33,954 maps georeferenced ; geotiff

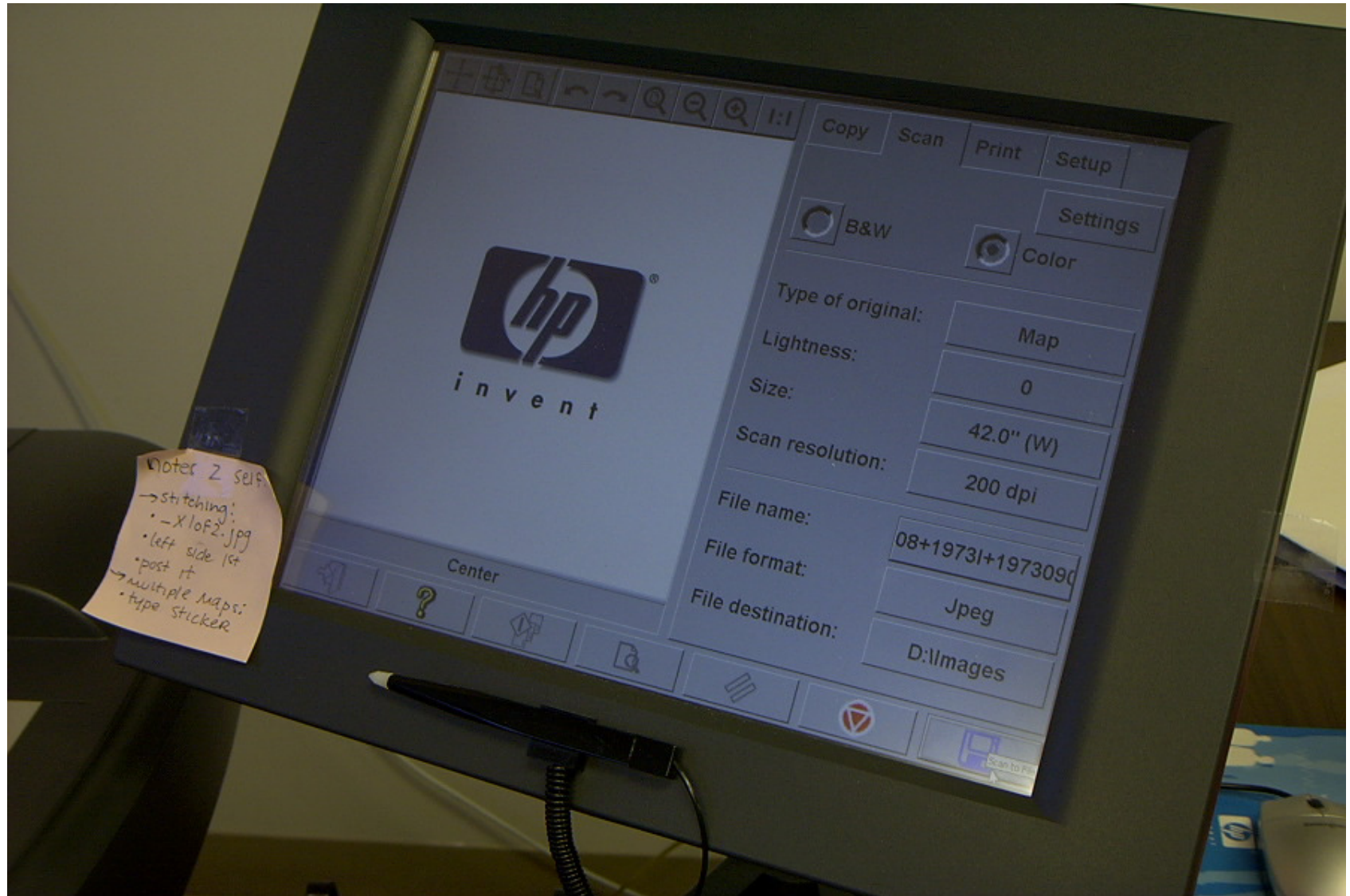
Widecom 36" CCD / LED SCSI scanner, circa 2000



HP4200 (Contex) scanner , USB/firewire, bulb illumination



Touch screen scanning interface



- # Contex HD5400 series

- http://usa.contex.com/usa/scanners/hd_scanners/54-quot_large_format_scanners.aspx



54" Large format scanners

Select a 54 inch large format scanner that can take up till B0-sizes

Image Quality Without Compromise




With 508dpi optical resolution, the combination of highly sensitive 4-channel CCD cameras and full-sized high-quality camera lenses, the HD5450 scanner provide the best image quality available in wide format scanning. With image processing performed inside the scanner, your PC is free to run software applications more efficiently.

Speed When You Need

The Contex HD5450 wide format scanner is among the fastest in the business with up to 12 inch/second scanning speeds. Truly a workhorse that can handle very large originals with speed and ease. When you want productivity and reliability, the HD5450 scanner gives you the best performance and the highest return on your investment.

Contex HD5450

- > 508 dpi optical res.
- > 9600 dpi max. res.
- > 48-bit color, 16-bit grayscale
- > 3.0 inch/sec. in 24-bit RGB color
- > 3.0 inch/sec. in 8-bit index color

	Request a Quote
	HD5400 Datasheet
	Buyers Guide

- Océ scanners up to 54"
- <http://www.oceusa.com/index.jsp>

Océ CS4300 Series Large Format Color Scanners

Advanced, Versatile, Wide Format Color Scanner



Océ Model	Replaces	Scan Width	Scan Speed (ft./min.) *			Scan Resolution		
			full color	8-bit color	mono	optical	enhanced	stepsize
Océ CS4336(Q)	Océ CS4136(Q)	36"	3(5)	7.4(17.7)	60(60)	600x600	1200(9600)	1
Océ CS4336(Q)S	Océ CS4136(Q)S	36"	7.4(14.8)	14.8(14.8)	60(60)	600x600	1200(9600)	1
Océ CS4342(Q)S	Océ CS4142(Q)S	42"	3(14.8)	14.8(14.8)	60(60)	600x600	1200(9600)	1
Océ CS4354(Q)S	Océ CS4154(Q)S	54"	7.4(14.8)	14.8(14.8)	60(60)	508x508	1200(9600)	1

Company	Model	Resolution		Size			Max Speed			Sensor Type (i.e. CCD, CIS)	Color Space	Base Price (USD)
		True Optical Resolution (dpi)	Max Resolution (dpi)	Max Document Width (Inches)	Max Scanning Width (Inches)	Max Length (feet)	Max Thickness (Inches)	B&W (ips)	Color (ips)			
COLORTAC INC. 703-717-5631, www.myprintresource.com/10004542	SmartLF Ci 24c	600	9600	25	24	Not limited by scanner	0.012	10	1.67	2D LED CIS	48	\$3,650
	SmartLF Ci 24e	600	9600	25	24	Not limited by scanner	0.012	10	3.33	2D LED CIS	48	\$3,950
	SmartLF Ci 24m	600	9600	25	24	Not limited by scanner	0.012	10	N/A	2D LED CIS	16	\$3,350
	SmartLF Ci 40c	600	9600	42	40	Not limited by scanner	0.012	10	1.67	2D LED CIS	48	\$5,500
	SmartLF Ci 40e	600	9600	42	40	Not limited by scanner	0.012	10	3.33	2D LED CIS	48	\$6,000
	SmartLF Ci 40m	600	9600	42	40	Not limited by scanner	0.012	10	N/A	2D LED CIS	16	\$5,000
	SmartLF Cx 40c	600	3600	44	40	Not limited by scanner	0.08	9	0.75	CIS	48	\$6,750
	SmartLF Cx 40e	600	3600	44	40	Not limited by scanner	0.08	9	3	CIS	48	\$7,250
	SmartLF Cx 40m	600	3600	44	40	Not limited by scanner	0.08	9	N/A	CIS	16	\$6,250
	SmartLF Gx+ 28c	1200	9600	34.13	28	Not limited by scanner	0.08	12	2	Quad CCD	48	\$6,500
	SmartLF Gx+ 28e	1200	9600	34.13	28	Not limited by scanner	0.08	12	4	Quad CCD	48	\$7,250
	SmartLF Gx+ 28m	1200	9600	34.13	28	Not limited by scanner	0.08	12	N/A	Quad CCD	16	\$5,750
	SmartLF Gx+ T28c	1200	9600	34	28	Not limited by scanner	0.8	12	2	Quad CCD	48	\$7,500
	SmartLF Gx+ T28e	1200	9600	34	28	Not limited by scanner	0.8	12	4	Quad CCD	48	\$8,250
	SmartLF Gx+ T28m	1200	9600	34	28	Not limited by scanner	0.8	12	N/A	Quad CCD	16	\$6,750
	SmartLF Gx+ 42c	1200	9600	46	42	Not limited by scanner	0.08	12	2	Quad CCD	48	\$9,450
	SmartLF Gx+ 42e	1200	9600	46	42	Not limited by scanner	0.08	12	4	Quad CCD	48	\$10,200
	SmartLF Gx+ 42m	1200	9600	46	42	Not limited by scanner	0.08	12	N/A	Quad CCD	16	\$8,700
	SmartLF Gx+ T42c	1200	9600	46	42	Not limited by scanner	0.8	12	2	Quad CCD	48	\$10,450
	SmartLF Gx+ T42e	1200	9600	46	42	Not limited by scanner	0.8	12	4	Quad CCD	48	\$11,200
	SmartLF Gx+ T42m	1200	9600	46	42	Not limited by scanner	0.8	12	N/A	Quad CCD	16	\$9,700
	SmartLF Gx+ 56c	1200	9600	61.8	56	Not limited by scanner	0.08	9	1.5	Quad CCD	48	\$18,000
	SmartLF Gx+ 56e	1200	9600	61.8	56	Not limited by scanner	0.08	9	3	Quad CCD	48	\$19,000
SmartLF Gx+ 56m	1200	9600	61.8	56	Not limited by scanner	0.08	9	N/A	Quad CCD	16	\$17,000	
SmartLF Gx+ T56c	1200	9600	61.8	56	Not limited by scanner	0.8	9	1.5	Quad CCD	48	\$19,500	
SmartLF Gx+ T56e	1200	9600	61.8	56	Not limited by scanner	0.8	9	3	Quad CCD	48	\$20,500	
SmartLF Gx+ T56m	1200	9600	61.8	56	Not limited by scanner	0.8	9	N/A	Quad CCD	16	\$18,500	
CONTEX 866-775-8327 www.myprintresource.com/10004587	HD3630	600	1200 / 9600	36	44	unlimited based on file format	0.6	12	0.6	CCD	sRGB	\$10,900
	HD3650	600	1200 / 9600	36	44	unlimited based on file format	0.6	12	1.5	CCD	sRGB	\$14,900
	HD4230	600	1200 / 9600	42	44	unlimited based on file format	0.6	12	0.6	CCD	sRGB	\$12,900
	HD4230i	600	1200 / 9600	42	44	unlimited based on file format	0.6	12	1	CCD	sRGB	\$15,900
	HD4250	600	1200 / 9600	42	44	unlimited based on file format	0.6	12	1.5	CCD	sRGB	\$15,900

Company	Model	Resolution		Size			Max Speed		Sensor Type (i.e. CCD, CIS)	Color Space	Base Price (USD)	
		True Optical Resolution (dpi)	Max Resolution (dpi)	Max Document Width (Inches)	Max Scanning Width (Inches)	Max Length (feet)	Max Thickness (Inches)	B&W (ips)				Color (ips)
CONTEX 866-775-8327 www.myprintresource.com/10004587	HD5450	508	1200 / 9600	54	56	unlimited based on file format	0.6	12	1.5	CCD	sRGB	\$25,900
	SD4410	1200	9600	44	47	unlimited based on file format	.08-inch	10	N/A	CIS	sRGB	\$7,900
	SD4430	1200	9600	44	47	unlimited based on file format	.08-inch	5	1	CIS	sRGB	\$8,900
	SD4450	1200	9600	44	47	unlimited based on file format	.08-inch	10	1.5	CIS	sRGB	\$9,900
	SD4490	1200	9600	44	47	unlimited based on file format	.08-inch	10	3	CIS	sRGB	\$11,900
	XD2490	1200	9600	24	26.6	unlimited based on file format	.08-inch	539	250	CIS	sRGB	\$3,970
GRAPHTEC AMERICA INC. 800-854-8385 www.myprintresource.com/10005695	CS510-HDplus	600	800	44 (ANSI E)	43	52.5	0.06	13s/E size	41s/E size	CIS	24bit color	\$15,995
	CS510-HDplus Pro	600	9600	44 (ANSI E)	43	52.5	0.06	8s/E size	29s/E size	CIS	24bit color	\$17,995
	CS610-HDplus	600	800	44 (ANSI E)	43	52.5	0.8	13s/E size	41s/E size	CIS	24bit color	\$18,995
	CS610-HDplus Pro	600	9600	44 (ANSI E)	43	52.5	0.8	8s/E size	29s/E size	CIS	24bit color	\$20,995
	CSX300-09 HDplus	600	9600	44 (ANSI E)	38.7	3278	0.06	6ips	2ips	CIS	24bit color	\$9,995
	IS210-HDplus	600	800	44 (ANSI E)	43	52.5	0.06	13s/E size	N/A	CIS	8bit gray	\$9,995
	IS210-HDplus Pro	600	4800	44 (ANSI E)	43	52.5	0.06	8s/E size	N/A	CIS	8bit gray	\$11,995
	IS210-HDplus Pro LC	600	9600	44 (ANSI E)	43	52.5	0.06	8s/E size	16s/E size	CIS	8bit color	\$13,995
HEWLETT-PACKARD 866-229-7313 www.myprintresource.com/10005824	HP Designjet HD Scanner	600	9600	44	42	N/A	0.6	10	3	CCD	CMYK	\$18,995
	HP Designjet T1200 HD MFP	600	9600	44	42	N/A	0.6	6	2	CCD	CMYK	\$21,995
	HP Designjet T2300 eMFP	600	600	36	36	93.6	0.03	4.5	1.5	CIS	CMYK	\$8,450
KIP AMERICA 800-252-6793 www.myprintresource.com/10006264	KIP 600	600	600	38	36	75	0.06	7.7	2.6	CIS	sRGB	\$9,000
	KIP 2300	600	2400	42	36	75	0.6	12	12	CCD	sRGB	\$15,000
OCÉ NORTH AMERICA www.myprintresource.com/10006967	Océ CS4236	1200 x 1200	9600	36	36	not limited by scanner	0.04	25 lin. ft / min	5 lin ft/min	CIS- single camera	sRGB	\$9,600
	Océ CS4336	600 x 600	1200	36	36	not limited by scanner	0.6	60 lin ft / min	7.4 lin ft / min	triple 4-linear CCDs	sRGB	\$11,600
	Océ CS4336QS	600 x 600	9600	36	36	not limited by scanner	0.6	60 lin ft / min	14.8 lin ft / min	triple 4-linear CCDs	sRGB	\$18,200
	Océ CS4336S	600 x 600	1200	36	36	not limited by scanner	0.6	60 lin ft / min	14.8 lin ft / min	triple 4-linear CCDs	sRGB	\$16,200
	Océ CS4342QS	600 x 600	9600	42	42	not limited by scanner	0.6	60 lin ft / min	14.8 lin ft / min	triple 4-linear CCDs	sRGB	\$22,600

Company	Model	Resolution		Size		Max Length (feet)	Max Thickness (Inches)	Max Speed		Sensor Type (i.e. CCD, CIS)	Color Space	Base Price (USD)
		True Optical Resolution (dpi)	Max Resolution (dpi)	Max Document Width (Inches)	Max Scanning Width (Inches)			B&W (ips)	Color (ips)			
OCÉ NORTH AMERICA www.myprintresource.com/10006967	Océ CS4342S	600 x 600	1200	42	42	not limited by scanner	0.6	60 lin ft / min	14.8 lin ft / min	triple 4-linear CCDs	sRGB	\$20,600
	Océ CS4354QS	508 x 508	9600	54	54	not limited by scanner	0.6	60 lin ft / min	14.8 lin ft / min	triple 4-linear CCDs	sRGB	\$30,600
	Océ CS4354S	508 x 508	1200	54	54	not limited by scanner	0.6	60 lin ft / min	14.8 lin ft / min	triple 4-linear CCDs	sRGB	\$28,600
	Océ TC4 Stand Alone Scanner	575	600	40	36	588	0.12	16.4 lin ft / min	13.1 lin ft / min	Single 3-color linear CCD	sRGB	\$20,000
	Océ TC4XT	575	600	40	36	588	0.6	16.4 lin ft / min	13.1 lin ft / min	Single 3-color linear CCD	sRGB	\$9,495
	Océ TC4 scanner available w/ Océ TCS500 print engine	575	600	36	35.8	588	0.12	10 lin ft / min	3.5 lin ft / min	Single 3-color linear CCD	sRGB	\$7,995
	Océ TC4 scanner available w/ Océ TDS750 print engine	575	600	36	35.8	236	0.12	16.4 lin. ft./ min.	13.1 lin. ft./ min.	Single 3-color linear CCD	sRGB	\$7,995
	Océ TDS810 scanner	400	400	36	35.8	588	0.04	33 lin ft / min	n/a	CCD with Océ ImageLogic	Monochrome	\$45,995
PARADIGM www.myprintresource.com/10007112	Graphtec CS510HDPlus BASE	600	800	42.9	42	unlimited based on available disk space	0.06	4.5	1.5	CIS	sRGB Compatible	\$15,995
	Graphtec CS510HDPlus PRO	600	9600	42.9	42	unlimited based on available disk space	0.06	9	3	CIS	sRGB Compatible	\$17,995
	Graphtec CS510-06HDPlus PRO	600	9600	25	25	unlimited based on available disk space	0.06	9	3	CIS	sRGB Compatible	\$9,995
	Graphtec CS610HDPlus BASE	600	800	42.9	42	unlimited based on available disk space	0.8	4.5	1.5	CIS	sRGB Compatible	\$19,995
	Graphtec CS610HDPlus PRO	600	9600	42.9	42	unlimited based on available disk space	0.8	9	3	CIS	sRGB Compatible	\$20,995
	Graphtec CSX300-09HDPlus	600	9600	36	36	unlimited based on available disk space	0.06	7	2	CIS	sRGB Compatible	\$9,995
	Graphtec IS210HDPlus BASE	600	800	42.9	42	unlimited based on available disk space	0.06	4.5	N/A	CIS	sRGB Compatible	\$9,995
	Graphtec IS210HDPlus PRO	600	4800	42.9	42	unlimited based on available disk space	0.06	9	N/A	CIS	sRGB Compatible	\$11,995
	Graphtec IS210HDPlus PRO LC	600	9600	42.9	42	unlimited based on available disk space	0.06	9	3	CIS	sRGB Compatible	\$13,995
	Paradigm imagePRO Ci24c	600	9600	25	24	unlimited based on available disk space	0.012	10	1.67	CIS	RAW RGB/sRGB	\$3,695
	Paradigm imagePRO Ci24e	600	9600	25	24	unlimited based on available disk space	0.012	10	3	CIS	RAW RGB/sRGB	\$3,995
	Paradigm imagePRO Ci24m	600	9600	25	24	unlimited based on available disk space	0.012	10	N/A	CIS	N/A	\$3,495

Company	Model	Resolution		Size		Max Length (feet)	Max Thickness (Inches)	Max Speed		Sensor Type (i.e. CCD, CIS)	Color Space	Base Price (USD)
		True Optical Resolution (dpi)	Max Resolution (dpi)	Max Document Width (Inches)	Max Scanning Width (Inches)			B&W (ips)	Color (ips)			
PARADIGM www.myprintresource.com/10007112	Paradigm imagePRO Ci40c	600	9600	42	40	unlimited based on available disk space	0.02	10	0.5	CIS	RAW RGB/sRGB	\$5,495
	Paradigm imagePRO Ci40e	600	9600	42	40	unlimited based on available disk space	0.02	10	3	CIS	RAW RGB/sRGB	\$5,995
	Paradigm imagePRO Ci40m	600	9600	42	40	unlimited based on available disk space	0.02	10	N/A	CIS	N/A	\$4,995
	Paradigm imagePRO Gx 42c HD Plus	1200	9600	48	42	unlimited based on available disk space	0.08	12	1	CCD	RAW RGB/sRGB	\$9,995
	Paradigm imagePRO Gx 42e HD Plus	1200	9600	48	42	unlimited based on available disk space	0.08	12	4	CCD	RAW RGB/sRGB	\$10,995
	Paradigm imagePRO Gx 42m HD Plus	1200	9600	48	42	unlimited based on available disk space	0.08	12	N/A	CCD	N/A	\$8,995
	Paradigm imagePRO GxT 42c HD Plus	1200	9600	48	42	unlimited based on available disk space	0.8	12	1	CCD	RAW RGB/sRGB	\$11,995
	Paradigm imagePRO GxT 42e HD Plus	1200	9600	48	42	unlimited based on available disk space	0.8	12	4	CCD	RAW RGB/sRGB	\$12,995
	Paradigm imagePRO GxT 42m HD Plus	1200	9600	48	42	unlimited based on available disk space	0.8	12	N/A	CCD	N/A	\$10,995
	Paradigm imagePRO Gx 56c HD Plus	600	9600	61	56	unlimited based on available disk space	0.08	9	1.5	CCD	N/A	\$18,995
	Paradigm imagePRO Gx 56e HD Plus	600	9600	61	56	unlimited based on available disk space	0.08	9	3	CCD	RAW RGB/sRGB	\$19,995
	Paradigm imagePRO Gx 56m HD Plus	600	9600	61	56	unlimited based on available disk space	0.08	9	N/A	CCD	RAW RGB/sRGB	\$17,995
	Paradigm imagePRO GxT 56c HD Plus	600	9600	61	56	unlimited based on available disk space	0.8	9	1.5	CCD	RAW RGB/sRGB	\$20,995
	Paradigm imagePRO GxT 56e HD Plus	600	9600	61	56	unlimited based on available disk space	0.8	9	3	CCD	RAW RGB/sRGB	\$21,995
	Paradigm imagePRO GxT 56m HD Plus	600	9600	61	56	unlimited based on available disk space	0.8	9	N/A	CCD	RAW RGB/sRGB	\$19,995

Colortrac wide format scanners up to 56 “ (61.8” opening)

<http://www.colortrac.com/large-format-scanner-info/gx+-56-large-format-scanner.htm>

Scanner Overview

Which Scanner to Choose?

Professional MFP Solutions

MFP Buyers Guide

SmartLF Ci 24 Scanners

SmartLF Ci 40 Scanners

SmartLF Cx+ 40 Scanners

SmartLF Gx+ 28 Scanners

SmartLF Gx+ 42 Scanners

SmartLF Gx+ 56 Scanners

SmartLF Gx+ 56

[Get a Quote](#)

Extra-Wide Format Scanners for
Specialist Applications & Service Providers

Suitable for up to E-Size+ (A0+)

56in



For:

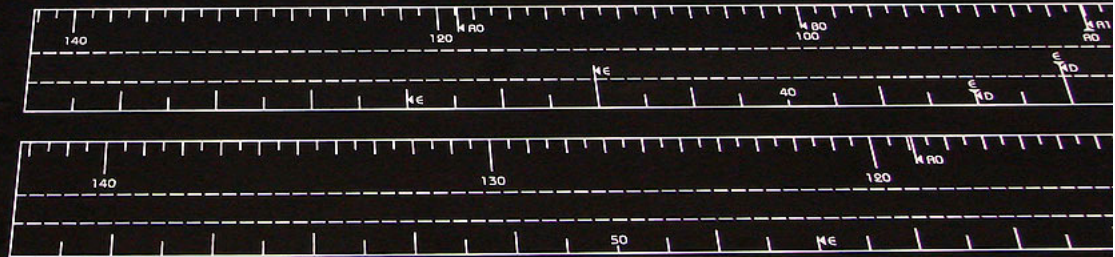
Reprographics, Mapping & GIS, Aeronautics, Automotive & Other Over Size Large Format Documents.

OMSL Kentucky ; scanning room 2012





Colortrac SmartLF Gx+ T56



10.48.6.220

Ready
39.64 in

MENU



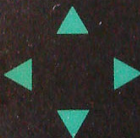
COPY



FWD



PREV



NEXT

BACK



CANCEL

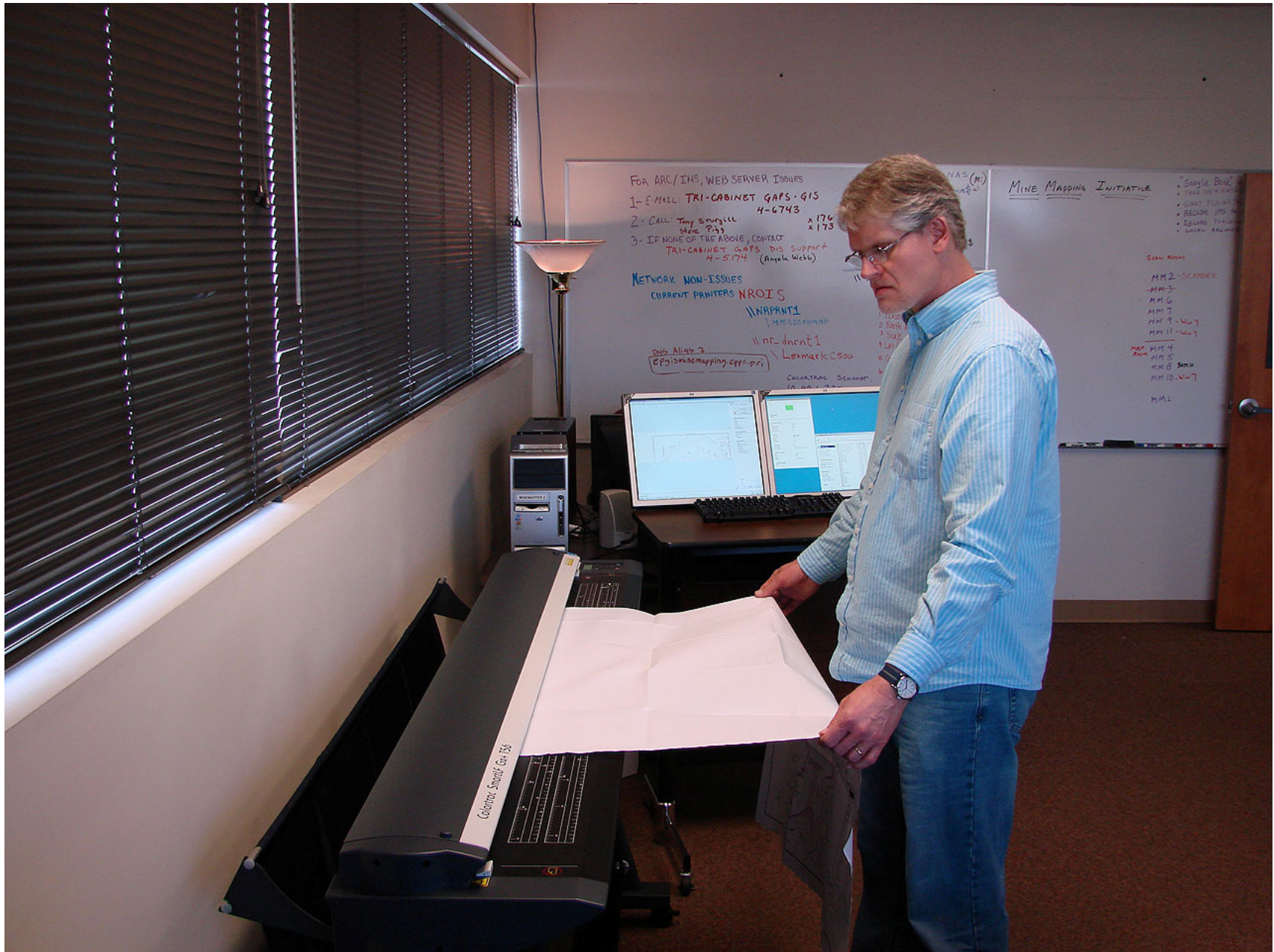


ENTER



FILE

WALTON



FOR ARC/INS, WEB SERVER ISSUES

- 1- E-MAIL: TRI-CABINET GAPS-GIS 4-6743
- 2- CALL: Tony Sturgill x176
Steve Poy x173
- 3- IF NONE OF THE ABOVE, CONTACT TRI-CABINET GAPS DIS SUPPORT 4-5174 (Angeh Webb)

NETWORK NON-ISSUES

- CURRENT PRINTERS NROIS
- \\NRPRT1
 - \\M2200MAP
 - \\nc-dnsat1
 - Lexmark C500
- DNS Alias 2
E:\gis\arcmapping\cpr-pci
- ColorScan Scanner

MINE MAPPING INITIATIVE

- Google Earth
- TMS
- ArcGIS
- RESOLVE ITS
- ArcGIS
- ArcGIS

Scan Room

- MM2-SCANNER
- MM3
- MM6
- MM7
- MM9-Wu7
- MM11-Wu7
- MM4
- MM5
- MM8
- MM10-Wu7
- MM1





1 - CALL: Tony Sturgill 4-6743 x176
2 - CALL: Tony Sturgill 4-6743 x176
3 - IF NONE OF THE ABOVE, CONTACT TRI-CABINET GROUPS DIS SUPPORT 4-5174 (Angela Webb)

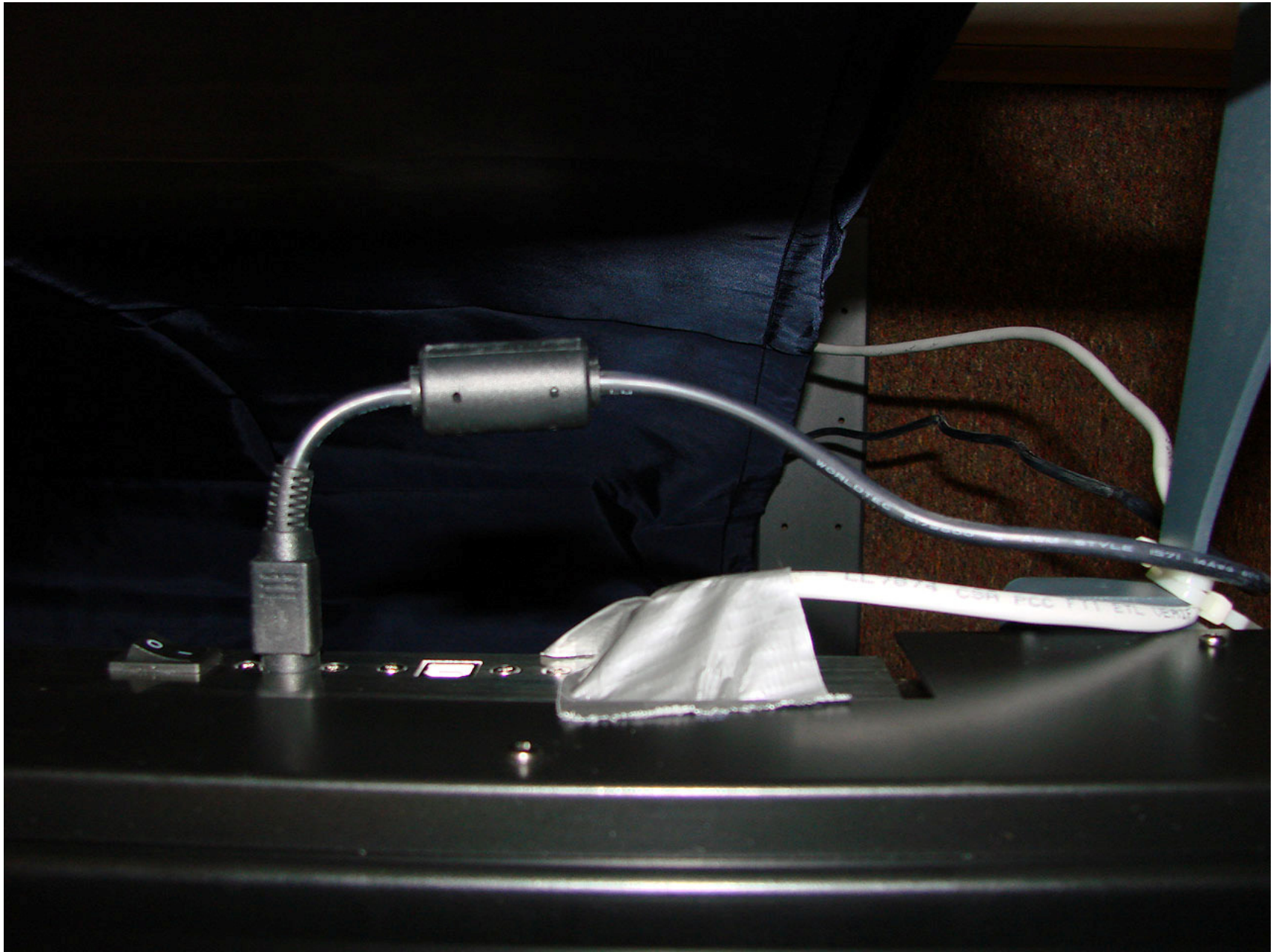
NETWORK NON-ISSUES
CURRENT PRINTERS NROIS
WINPANTI
MROCCOMAP
WINPANTI
Lexusmark C500

GIS DATA (S)
11205.204.201.814 data &
11miniscun2/images

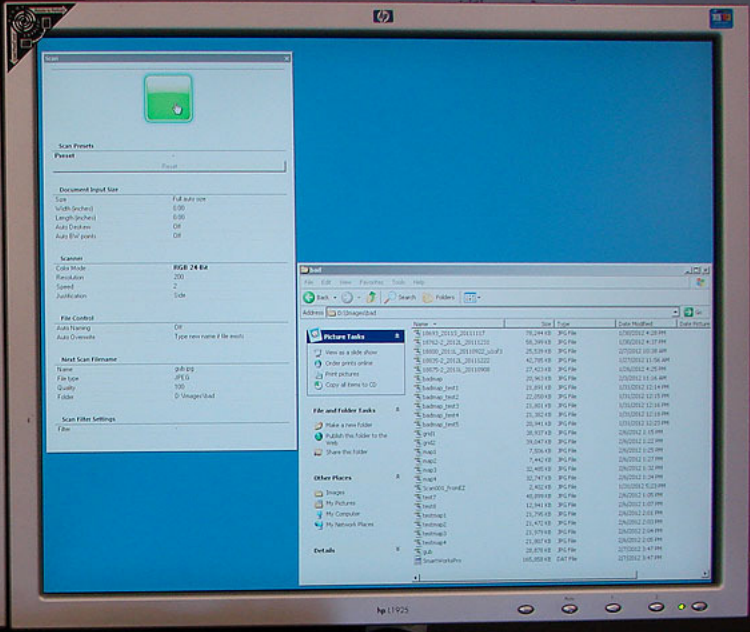
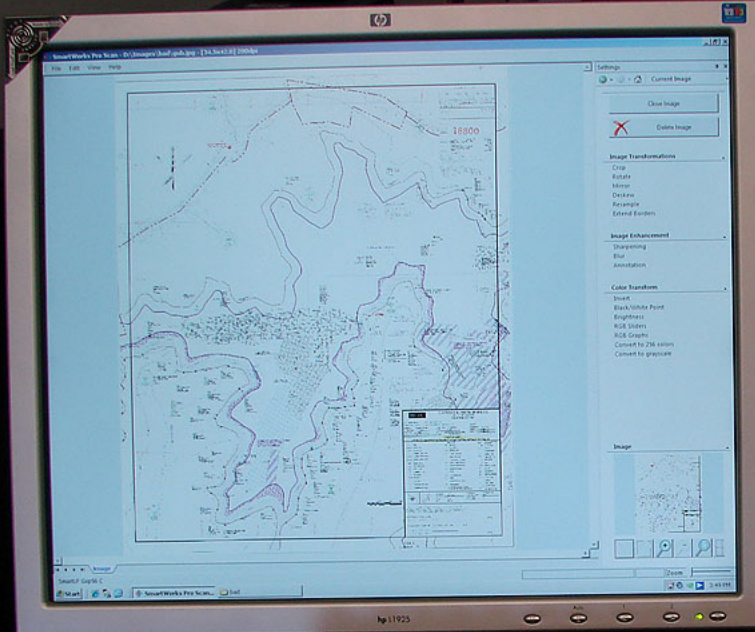
Check
1 - Press Ctrl+Alt+Del
2 - Press Ctrl+Alt+Del
3 - Log On
4 - Log On
5 - (Ctrl)+Alt+Del
6 - Log On

Prep
STARS
Clean-up
Recorder
(ACAS)
TIP - (TFR
TFR

FMBX04




COLORTRAC Scanner: 10.48.6.220
authorized
AGMB
\\epgisdata\batchmap_i\mmBatch



SmartWorks Pro Scan

File Edit View Help

Scan



Scan Presets

Preset	-
Reset	

Document Input Size

Size	Manual
Width (inches)	44.00
Length (inches)	56.00
Auto Deskew	Off
Auto BW points	Off

Scanner

Color Mode	RGB 24-Bit
Resolution	200
Speed	2
Justification	Center

File Control


Auto Naming	Off
Auto Overwrite	Type new name if file exists

Next Scan Filename

Name	09015-17_1979L_19790117.jpg
File type	JPEG
Quality	98
Folder	D:\Images


Scan Filter Settings

Filter	-
--------	---



Our Business is Your Image

[Getting Started](#)
www.colortrac.com



SmartWorks Pro
v1.1.1

Settings

Scanner Settings

Available Scanners

Scanner	SmartLF Gxp56 C (10.48.6.220)
---------	-------------------------------

Network Scanners

Active Scanner Information

Model: SmartLF Gxp56 C
Firmware: v1.34
Connection: Ethernet
IP Address: 10.48.6.220
Command Port: 17236
Data Port: 17237

Post scan behavior

Start on media detection	Off
Media handling	Eject media after scan

Color

Color	C:\Program Files\Colortrac\Smart\
Scanner Gamma	1.3
Scanner Brightness	0

Reset Gamma/Brightness

Create Profile

sRGB File Rendering

sRGB Intent	Absolute white point
-------------	----------------------

SmartLF Gxp56 C

Home

Zoom



[Getting Started](#)
www.colortrac.com



v1.1.1

Settings

Scanner Settings

Available Scanners

Scanner	SmartLF Gxp56 C (10.48.6.220)
---------	-------------------------------

Network Scanners

Active Scanner Information

Model: SmartLF Gxp56 C
Firmware: v1:34
Connection: Ethernet
IP Address: 10.48.6.220
Command Port: 17236
Data Port: 17237

Post scan behavior

Start on media detection	Off
Media handling	Eject media after scan

Color

Color	C:\Program Files\Colortrac\Smart\
Scanner Gamma	1.3
Scanner Brightness	0

Reset Gamma/Brightness

Create Profile

sRGB File Rendering

sRGB Intent	Absolute white point
-------------	----------------------



[Getting Started](#)
www.colortrac.com



v1.1.1

Settings

Summary Page

Scanner Settings

Size: Manual [44.00 x 56.00 inches]
Color Mode: RGB 24-Bit
Resolution: 200
Speed: 2
Justification: Center
Auto Deskew: Off
Auto BW points: Off

Preset

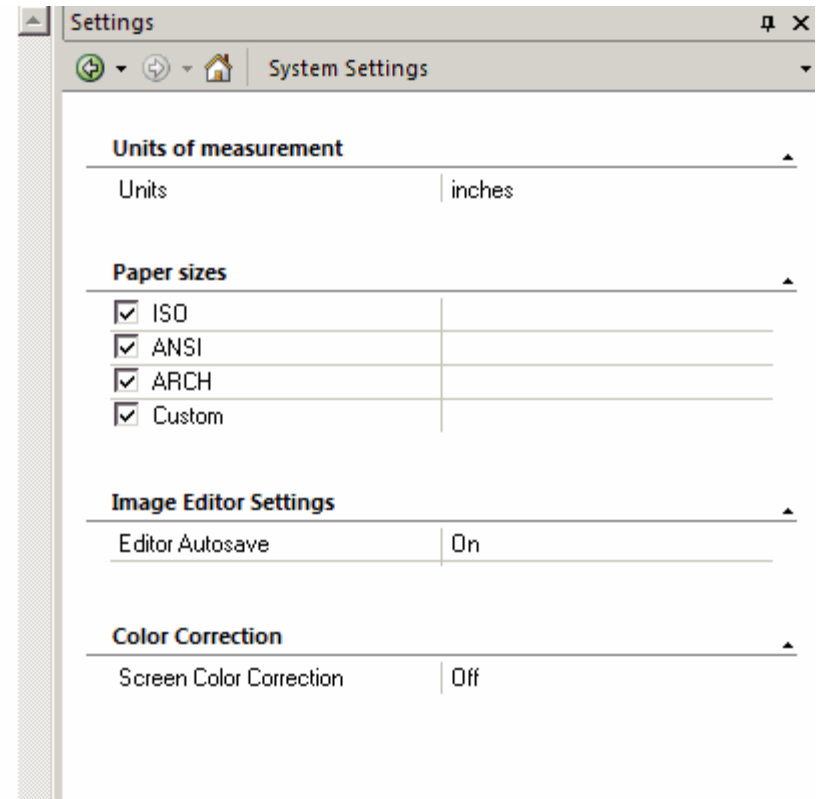
Preset Name: -
Scan filters: No Image Filters

Next Scan Filename

Filename: 09015-17_1979L_19790117.jpg
File type: JPEG
Folder: D:\Images
Uncompressed size: 282.0 MB



[Getting Started](#)
www.colortrac.com





91617_1951L_19510206

91617

Settings

Current Image

Close Image



Delete Image

Image Transformations

- Crop
- Rotate
- Mirror
- Deskew
- Resample
- Extend Borders

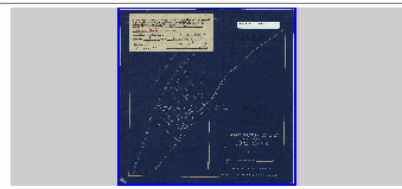
Image Enhancement

- Sharpening
- Blur
- Annotation

Color Transform

- Invert
- Black/White Point
- Brightness
- RGB Sliders
- RGB Graphs
- Convert to 256 colors
- Convert to grayscale

Image



Scan



Scan Presets

Preset: -
Reset

Document Input Size

Size	Full auto size
Width (inches)	0.00
Length (inches)	0.00
Auto Deskew	Off
Auto B/W points	Off

Scanner

Color Mode	RGB 24-Bit
Resolution	200
Speed	2
Justification	Center

File Control

Auto Naming	Off
Auto Overwrite	Type new name if file exists

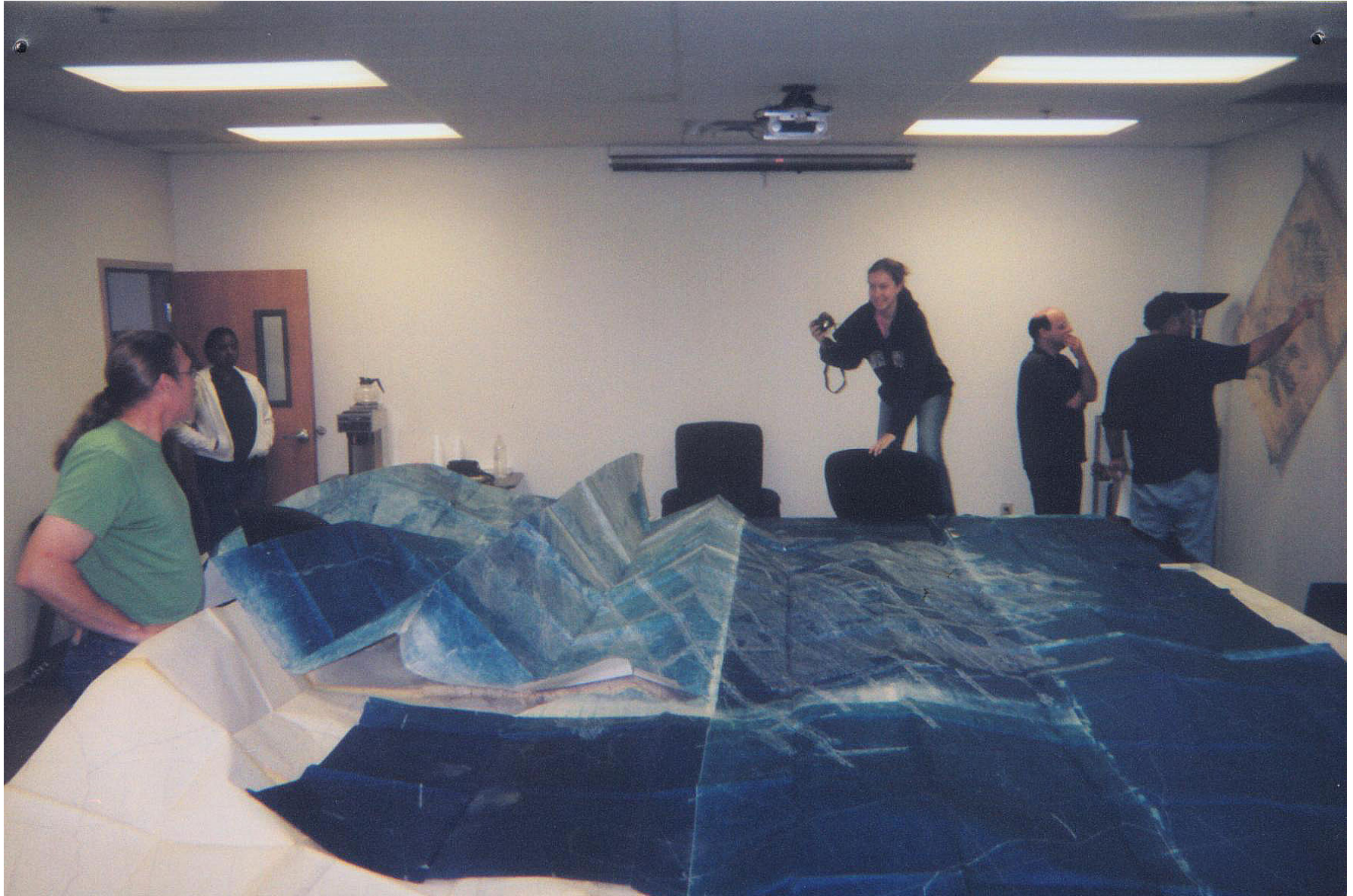
Next Scan Filename

Name	test.jpg
File type	JPEG
Quality	98
Folder	D:\Images\hold

Scan Filter Settings

Filter: -

Kentucky's largest blueprint mine map, about 20ft x 20 ft



Cruse Digital Imaging Equipment

- http://www.crusedigital.com/cd_main.asp

Cruse Scanners

- **Synchron Table Decor:**

- [CS 155 ST](#)
- [CS 185 ST](#)
- [CS 220 ST](#)
- [CS 285 ST](#)

- **Synchron Table Fine Art:**

- [CS 155 ST](#)
- [CS 185 ST](#)
- [CS 220 ST](#)
- [CS 285 ST](#)

- **Book Scanner:**

- [CS 80B-FL](#)
- [CS 110B-FL](#)
- [CS 80B-SL](#)
- [CS 110B-SL](#)

- **Professional Scanners:**

- [CS 130/275 P](#)
- [CS 130/450 P](#)
- [CS 155/275 P](#)
- [CS 155/450 P](#)

- **Synchron Light Scanners:**

- [CS 130/275 SL](#)
- [CS 130/450 SL](#)
- [CS 155/275 SL](#)
- [CS 155/450 SL](#)
- [CS 185/275 SL](#)
- [CS 185/450 SL](#)
- [CS 220/275 SL](#)
- [CS 220/450 SL](#)
- [CS 285/450 SL](#)

Cruse large format scanner 2012

CS Synchron Table ST

Inclusive

Magnetic plate
TEXTURE Effect
Automatic Light Correction Program*
Scan Software CSx

Options available

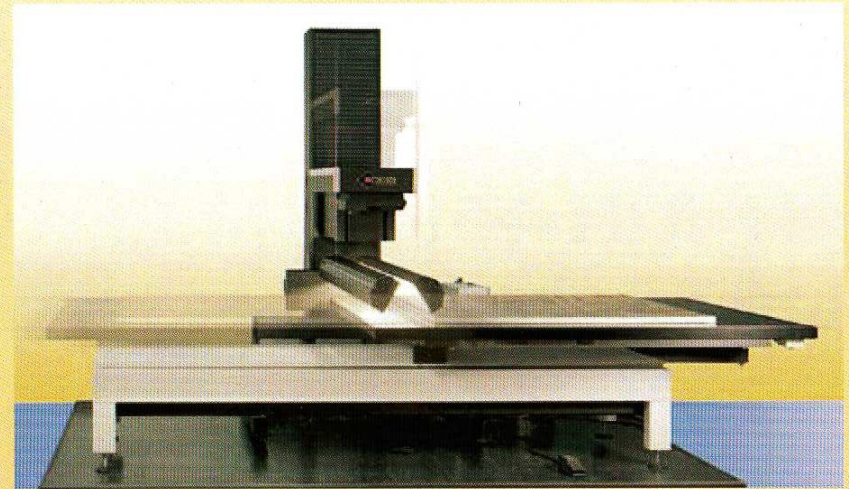
Light Angle Device (LA)
Vacuum Board
Lightbox
Variable TEXTURE Effect
Frame Correction Program
Variable Scan Speed, inclusive "Endless Scan"
Integrated Book Cradle in synchronous Mode

Inklusive

Magnetplatte
TEXTUR Effekt
Automatisches Lichtkorrekturprogramm*
Scan Software CSx

Verfügbare Optionen

Licht Ablenker (LA)
Vakuumplatte
Lichtbox
Variabler TEXTUR Effekt
Bilderrahmen Ausgleichsprogramm
Variable Scan-Geschwindigkeit, inklusive „Endlos Scan“
Integrierte Buchwippe im Synchronbetrieb

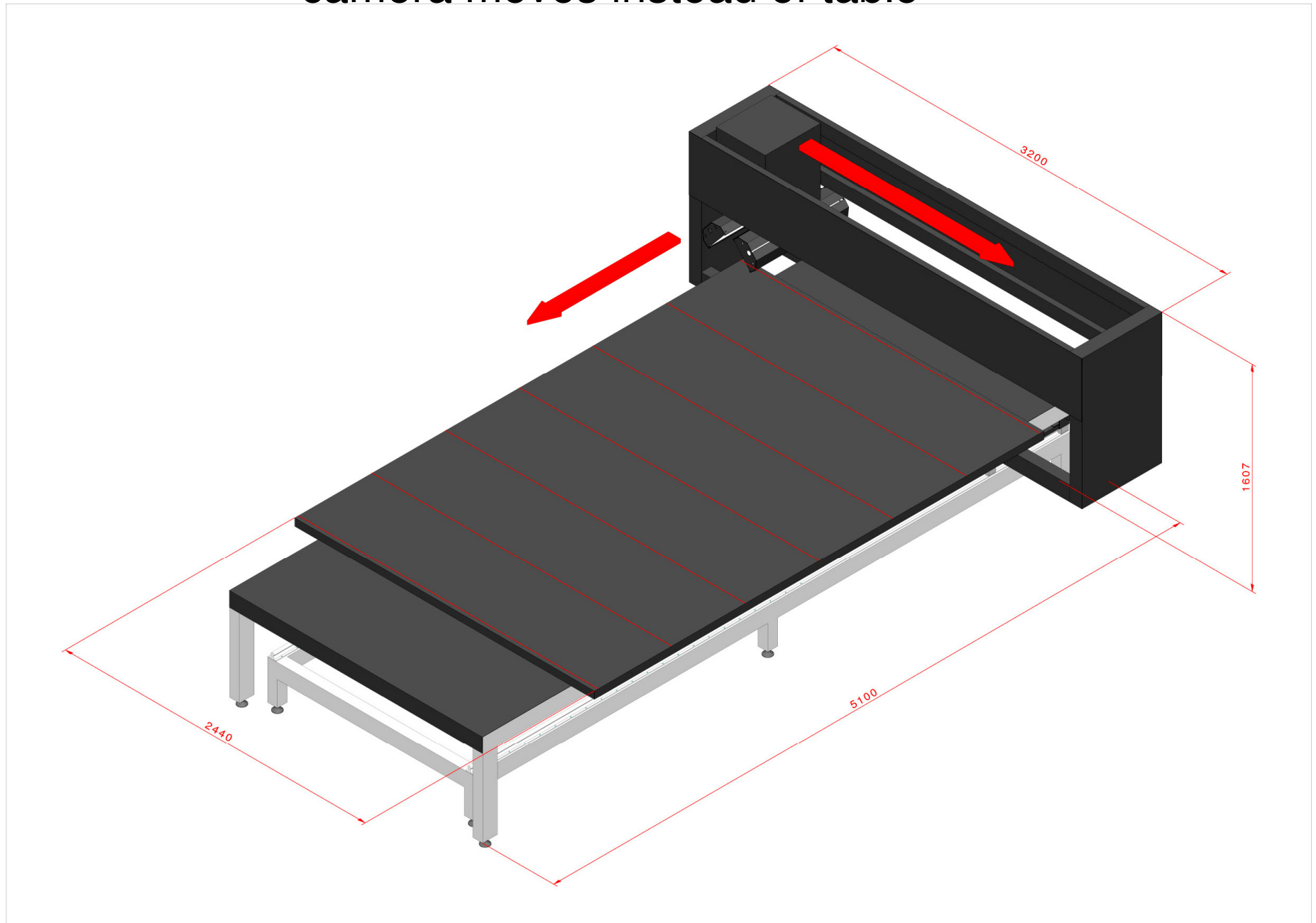


	max. Copy Board max. Originalgröße	max. Pixel Resolution max. Pixelauflösung	Resolution max. Copy Board Auflösung max. Originalgröße	max. Resolution max. Scan Size max. Auflösung max. Scanformat
CS 130ST ⁵³⁰	70 x 100 cm	10.000 x 15.000	350 dpi	700 dpi = 36 x 66 cm
CS 145ST ⁵³⁰	84 x 120 cm	10.000 x 15.000	300 dpi	700 dpi = 36 x 66 cm
CS 155ST ¹¹⁰⁰	92 x 122 cm	14.000 x 19.000	380 dpi	1.000 dpi = 35 x 66 cm
CS 185ST ¹¹⁰⁰	100 x 150 cm	14.000 x 22.000	350 dpi	1.000 dpi = 35 x 66 cm
CS 220ST ¹¹⁰⁰	120 x 180 cm	14.000 x 22.000	300 dpi	1.000 dpi = 35 x 66 cm
CS 295ST ¹¹⁰⁰	150 x 250 cm	14.000 x 24.000	240 dpi	1.000 dpi = 35 x 66 cm

The ultimate solution for Fine Art Reproduction as well as Mapping, Geophysical, Technical Drawing, Wall Paper, Paintings, Fabrics etc. Also used in the Pre-Press and packaging industries.

Die ultimative Lösung für Kunst-Reproduktion sowie technische Zeichnungen, Katasterwesen, Tapetenvorlagen, Gemälde, Textilien etc. Wird auch in der Druckvorstufe und Verpackungsindustrie eingesetzt.

- Cruise scanner on the drawing board, camera moves instead of table





what map?

Kentucky Office of Mine Safety & Licensing UK Center for Applied Energy Research Mine Mapping Program

<http://minemaps.ky.gov/>

John K. Hiatt john.hiatt@ky.gov

Tom Schubert tom.schubert@ky.gov

502 573-0140 x 234

<http://omsl.ky.gov/Pages/MineMapping.aspx>

OMSL
PO Box 2244
Frankfort KY 40602